

For Research Use Only

PDCD2L Monoclonal antibody

Catalog Number: 68249-1-Ig



Basic Information

Catalog Number: 68249-1-Ig	GenBank Accession Number: BC006146	Purification Method: Protein G purification
Size: 150ul , Concentration: 1000 ug/ml by Nanodrop;	GeneID (NCBI): 84306	CloneNo.: 2G12C4
Source: Mouse	UNIPROT ID: Q9BRP1	Recommended Dilutions: WB 1:5000-1:50000 IF/ICC 1:200-1:800
Isotype: IgG1	Full Name: programmed cell death 2-like	
Immunogen Catalog Number: AG30807	Calculated MW: 358 aa, 39 kDa	
	Observed MW: 39 kDa	

Applications

Tested Applications: WB, IF/ICC, ELISA	Positive Controls:
Species Specificity: Human	WB : A549 cells, LNCaP cells, HCT 116 cells, HeLa cells, K-562 cells, HepG2 cells
	IF/ICC : HEK-293 cells,

Background Information

PDCD2L was aberrantly expressed in multiple types of human cancers, and associated with clinical stage and molecular subtype and PDCD2L could be served as a biomarker of CRC (PMID: 35216602).

Storage

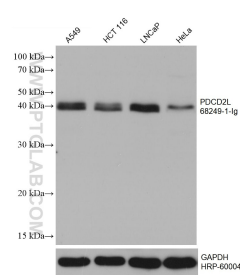
Storage:
Store at -20°C. Stable for one year after shipment.
Storage Buffer:
PBS with 0.02% sodium azide and 50% glycerol pH 7.3.
Aliquoting is unnecessary for -20°C storage

*** 20ul sizes contain 0.1% BSA

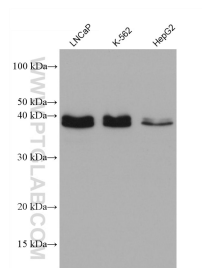
For technical support and original validation data for this product please contact:
T: 1 (888) 4PTGLAB (1-888-478-4522) (toll free in USA), or 1(312) 455-8498 (outside USA)
E: proteintech@ptglab.com
W: ptglab.com

This product is exclusively available under Proteintech Group brand and is not available to purchase from any other manufacturer.

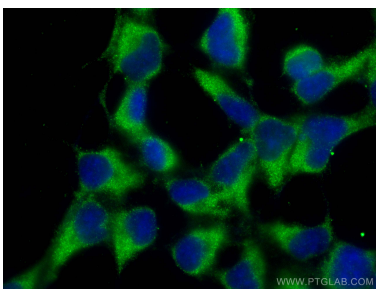
Selected Validation Data



A549 cells were subjected to SDS PAGE followed by western blot with 68249-1-Ig (PDCD2L antibody) at dilution of 1:10000 incubated at room temperature for 1.5 hours. The membrane was stripped and reblotted with HRP-conjugated GAPDH Monoclonal antibody (HRP-60004) as loading control.



Various lysates were subjected to SDS PAGE followed by western blot with 68249-1-Ig (PDCD2L antibody) at dilution of 1:5000 incubated at room temperature for 1.5 hours.



Immunofluorescent analysis of (-20°C Ethanol) fixed HEK-293 cells using PDCD2L antibody (68249-1-Ig, Clone: 2G12C4) at dilution of 1:400 and CoraLite®488-Conjugated AffiniPure Goat Anti-Mouse IgG(H+L).