

For Research Use Only

# Podocalyxin Monoclonal antibody, PBS Only



Catalog Number: 68250-1-PBS

## Basic Information

|  |  |   |
|--|--|---|
| <b>Catalog Number:</b><br>68250-1-PBS                          | <b>GenBank Accession Number:</b><br>BC093730 | <b>Purification Method:</b><br>Protein A purification |
| <b>Size:</b><br>100ug , Concentration: 1 mg/ml by<br>Nanodrop; | <b>GeneID (NCBI):</b><br>5420                | <b>CloneNo.:</b><br>4A3C7                             |
| <b>Source:</b><br>Mouse  | <b>UNIPROT ID:</b><br>O00592                 |   |
| <b>Isotype:</b><br>IgG2a                                       | <b>Full Name:</b><br>podocalyxin-like        |   |
| <b>Immunogen Catalog Number:</b><br>AG12859                    | <b>Calculated MW:</b><br>526 aa, 55 kDa      |   |
|  | <b>Observed MW:</b><br>60-70 kDa             |   |

## Applications

**Tested Applications:**  
IF, FC, IHC, Indirect ELISA

**Species Specificity:**  
Human

## Background Information

Podocalyxin, also known as podocalyxin-like protein 1 (PODXL or PCLP1), is a transmembrane glycoprotein belonging to the CD34 family of sialomucins. Podocalyxin was originally identified as the major sialoprotein on podocytes of the kidney glomerulus, but was later found to be expressed on vascular endothelial cells and early hematopoietic progenitors. It involved in the regulation of both adhesion and cell morphology. In addition, podocalyxin is highly expressed in embryonic stem cells and aberrant expression of podocalyxin has been implicated in a wide range of cancers. Podocalyxin is a protein with a peptide bone of 55.5 kDa that undergoes a post-translational glycosylation, the different molecular mass of podocalyxin indicates the extent and variability of glycosylation patterns (PMID: 17092254).

## Storage

**Storage:**  
Store at -80°C.

**Storage Buffer:**  
PBS Only

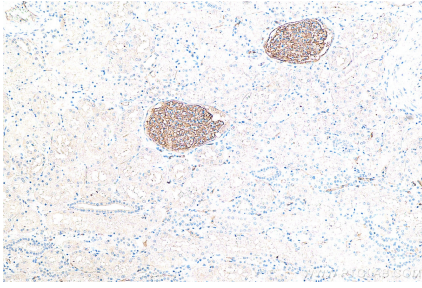
For technical support and original validation data for this product please contact:

T: 1 (888) 4PTGLAB (1-888-478-4522) (toll free  
in USA), or 1(312) 455-8498 (outside USA)

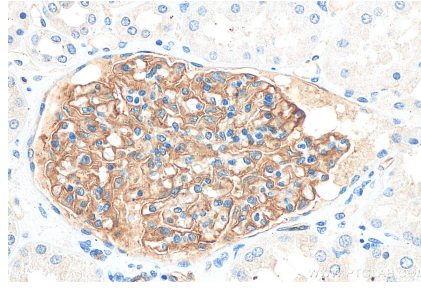
E: [proteintech@ptglab.com](mailto:proteintech@ptglab.com)  
W: [ptglab.com](http://ptglab.com)

**This product is exclusively available under Proteintech Group brand and is not available to purchase from any other manufacturer.**

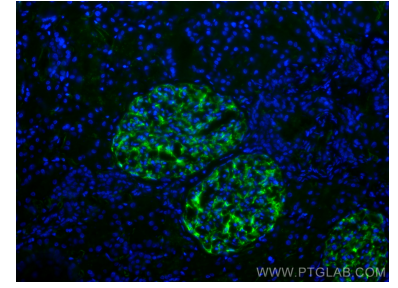
## Selected Validation Data



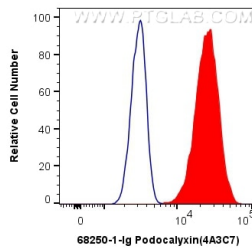
Immunohistochemical analysis of paraffin-embedded human kidney tissue slide using 68250-1-Ig (Podocalyxin antibody) at dilution of 1:1000 (under 10x lens). Heat mediated antigen retrieval with Tris-EDTA buffer (pH 9.0). This data was developed using the same antibody clone with 68250-1-PBS in a different storage buffer formulation.



Immunohistochemical analysis of paraffin-embedded human kidney tissue slide using 68250-1-Ig (Podocalyxin antibody) at dilution of 1:1000 (under 40x lens). Heat mediated antigen retrieval with Tris-EDTA buffer (pH 9.0). This data was developed using the same antibody clone with 68250-1-PBS in a different storage buffer formulation.



Immunofluorescent analysis of (4% PFA) fixed human kidney tissue using Podocalyxin antibody (68250-1-Ig, Clone: 4A3C7) at dilution of 1:400 and CoraLite®488-Conjugated AffiniPure Goat Anti-Mouse IgG(H+L). This data was developed using the same antibody clone with 68250-1-PBS in a different storage buffer formulation.



1X10<sup>6</sup> HeLa cells were intracellularly stained with 0.4 ug Anti-Human Podocalyxin (68250-1-Ig, Clone:4A3C7) and CoraLite®488-Conjugated AffiniPure Goat Anti-Mouse IgG(H+L) at dilution 1:1000 (red), or 0.4 ug Mouse IgG2a Isotype Control (66360-2-Ig, Clone: K11A1B2A2) (blue). Cells were fixed with 4% PFA and permeabilized with Flow Cytometry Perm Buffer (PF00011-C). This data was developed using the same antibody clone with 68250-1-PBS in a different storage buffer