

For Research Use Only

# ZER1 Monoclonal antibody

Catalog Number: 68258-1-Ig



## Basic Information

<b>Catalog Number:</b> 68258-1-Ig	<b>GenBank Accession Number:</b> BC052563	<b>Purification Method:</b> Protein A purification
<b>Size:</b> 150ul , Concentration: 1000 µg/ml by Nanodrop;	<b>GeneID (NCBI):</b> 10444	<b>CloneNo.:</b> 1H9G7
<b>Source:</b> Mouse	<b>Full Name:</b> zer-1 homolog (C. elegans)	<b>Recommended Dilutions:</b> WB 1:5000-1:50000 IF 1:400-1:1600
<b>Isotype:</b> IgG2a	<b>Calculated MW:</b> 766 aa, 88 kDa	
<b>Immunogen Catalog Number:</b> AG10040	<b>Observed MW:</b> 80-88 kDa	

## Applications

<b>Tested Applications:</b> IF, WB, ELISA	<b>Positive Controls:</b>
<b>Species Specificity:</b> Human	<b>WB :</b> LNCaP cells, Jurkat cells <b>IF :</b> HepG2 cells,

## Background Information

### Storage

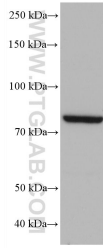
**Storage:**  
Store at -20°C. Stable for one year after shipment.  
**Storage Buffer:**  
PBS with 0.02% sodium azide and 50% glycerol pH 7.3.  
Aliquoting is unnecessary for -20°C storage

\*\*\* 20ul sizes contain 0.1% BSA

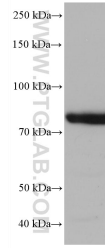
For technical support and original validation data for this product please contact:  
T: 1 (888) 4PTGLAB (1-888-478-4522) (toll free in USA), or 1(312) 455-8498 (outside USA)  
E: proteintech@ptglab.com  
W: ptglab.com

This product is exclusively available under Proteintech Group brand and is not available to purchase from any other manufacturer.

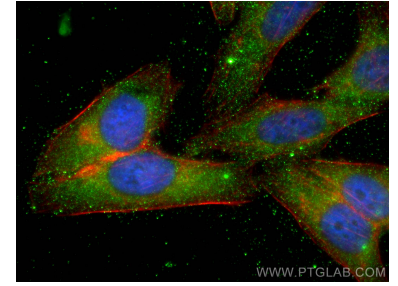
## Selected Validation Data



Jurkat cells were subjected to SDS PAGE followed by western blot with 68258-1-Ig (ZER1 antibody) at dilution of 1:10000 incubated at room temperature for 1.5 hours.



LNCaP cells were subjected to SDS PAGE followed by western blot with 68258-1-Ig (ZER1 antibody) at dilution of 1:10000 incubated at room temperature for 1.5 hours.



Immunofluorescent analysis of (-20°C Ethanol) fixed HepG2 cells using ZER1 antibody (68258-1-Ig, Clone: 1H9G7) at dilution of 1:800 and CoraLite®488-Conjugated AffiniPure Goat Anti-Mouse IgG(H+L), CL594-Phalloidin (red).