

For Research Use Only

CHCHD3 Monoclonal antibody

Catalog Number: 68259-1-Ig

Featured Product

1 Publications



Basic Information

Catalog Number:

68259-1-Ig

Size:

150ul, Concentration: 1000 ug/ml by

Nanodrop;

Source:

Mouse

Isotype:

IgG2a

Immunogen Catalog Number:

AG22628

GenBank Accession Number:

BC014839

GeneID (NCBI):

54927

UNIPROT ID:

Q9NX63

Full Name:

coiled-coil-helix-coiled-coil-helix domain containing 3

Calculated MW:

227 aa, 26 kDa

Observed MW:

26 kDa

Purification Method:

Protein A purification

CloneNo.:

1C8H12

Recommended Dilutions:

WB 1:5000-1:50000

IHC 1:500-1:2000

IF/ICC 1:400-1:1600

Applications

Tested Applications:

WB, IHC, IF/ICC, ELISA

Cited Applications:

WB

Species Specificity:

human, mouse, rat, pig, rabbit

Cited Species:

rat

Note-IHC: suggested antigen retrieval with TE buffer pH 9.0; (*) Alternatively, antigen retrieval may be performed with citrate buffer pH 6.0

Positive Controls:

WB: pig heart tissue, A549 cells, HeLa cells, rabbit heart tissue, rat heart tissue, mouse heart tissue, rat brain tissue

IHC: human lung tissue, human lung cancer tissue, mouse cerebellum tissue, mouse lung tissue, rat cerebellum tissue, rat heart tissue, rat lung tissue

IF/ICC: MCF-7 cells,

Background Information

CHCHD3, initially identified as a substrate for cAMP-dependent protein kinase (PKA), is a ubiquitous protein in the mitochondria and plays a prominent role in maintaining cristae integrity and mitochondrial function. In mitochondria, ChChd3 is predominantly localized to the inner membrane (IM), facing toward the intermembrane space (IMS), and is part of the large protein complex now called as MINOS (mitochondrial inner membrane organizing system), or MIB (mitochondrial intermembrane space bridging). CHCHD3 is highly conserved in mammals with human and mouse protein sharing 92% sequence similarity.

Notable Publications

| Author | Pubmed ID | Journal | Application |
|----------|-----------|----------------|-------------|
| Jian Guo | 36819507 | Ann Transl Med | WB |

Storage

Storage:

Store at -20°C. Stable for one year after shipment.

Storage Buffer:

PBS with 0.02% sodium azide and 50% glycerol pH 7.3.

Aliquoting is unnecessary for -20°C storage

*** 20ul sizes contain 0.1% BSA

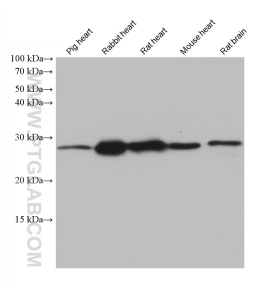
For technical support and original validation data for this product please contact:

T: 1 (888) 4PTGLAB (1-888-478-4522) (toll free in USA), or 1(312) 455-8498 (outside USA)

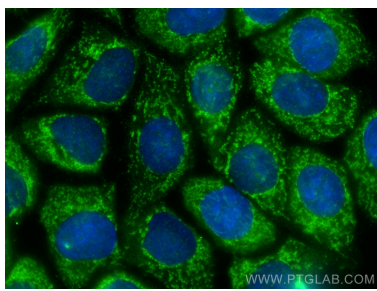
E: proteintech@ptglab.com
W: ptglab.com

This product is exclusively available under Proteintech Group brand and is not available to purchase from any other manufacturer.

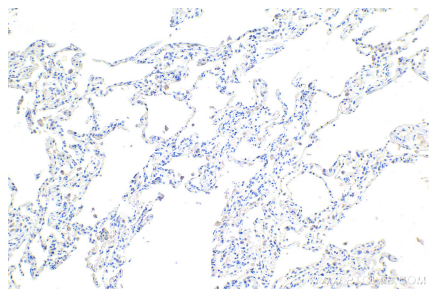
Selected Validation Data



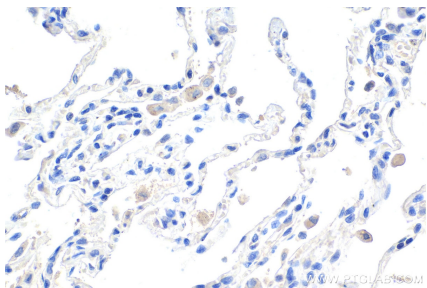
Various lysates were subjected to SDS PAGE followed by western blot with 68259-1-Ig (CHCHD3 antibody) at dilution of 1:20000 incubated at room temperature for 1.5 hours.



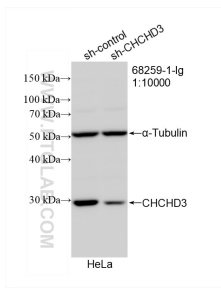
Immunofluorescent analysis of (-20°C Methanol) fixed MCF-7 cells using CHCHD3 antibody (68259-1-Ig, Clone: 1C8H12) at dilution of 1:800 and CoraLite®488-Conjugated AffiniPure Goat Anti-Mouse IgG(H+L).



Immunohistochemical analysis of paraffin-embedded human lung tissue slide using 68259-1-Ig (CHCHD3 antibody) at dilution of 1:1000 (under 10x lens). Heat mediated antigen retrieval with Tris-EDTA buffer (pH 9.0).



Immunohistochemical analysis of paraffin-embedded human lung tissue slide using 68259-1-Ig (CHCHD3 antibody) at dilution of 1:1000 (under 40x lens). Heat mediated antigen retrieval with Tris-EDTA buffer (pH 9.0).



WB result of CHCHD3 antibody (68259-1-Ig; 1:10000; incubated at room temperature for 1.5 hours) with sh-Control and sh-CHCHD3 transfected HeLa cells.