

For Research Use Only

# CHCHD3 Monoclonal antibody, PBS Only

Catalog Number: 68259-1-PBS

Featured Product



## Basic Information

Catalog Number:

68259-1-PBS

Size:

100ug, Concentration: 1 mg/ml by Nanodrop;

Source:

Mouse

Isotype:

IgG2a

Immunogen Catalog Number:

AG22628

GenBank Accession Number:

BC014839

GeneID (NCBI):

54927

UNIPROT ID:

Q9NX63

Full Name:

coiled-coil-helix-coiled-coil-helix domain containing 3

Calculated MW:

227 aa, 26 kDa

Observed MW:

26 kDa

Purification Method:

Protein A purification

CloneNo.:

1C8H12

## Applications

Tested Applications:

WB, IHC, IF/ICC, Indirect ELISA

Species Specificity:

human, mouse, rat, pig, rabbit

## Background Information

CHCHD3, initially identified as a substrate for cAMP-dependent protein kinase (PKA), is a ubiquitous protein in the mitochondria and plays a prominent role in maintaining cristae integrity and mitochondrial function. In mitochondria, ChChd3 is predominantly localized to the inner membrane (IM), facing toward the intermembrane space (IMS), and is part of the large protein complex now called as MINOS (mitochondrial inner membrane organizing system), or MIB (mitochondrial intermembrane space bridging) CHCHD3 is highly conserved in mammals with human and mouse protein sharing 92% sequence similarity.

## Storage

Storage:

Store at -80°C.

Storage Buffer:

PBS Only

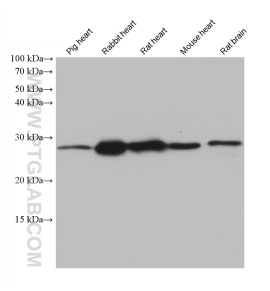
For technical support and original validation data for this product please contact:

T: 1 (888) 4PTGLAB (1-888-478-4522) (toll free in USA), or 1(312) 455-8498 (outside USA)

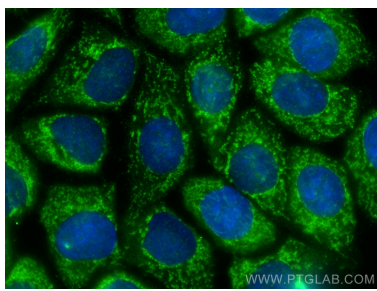
E: [proteintech@ptglab.com](mailto:proteintech@ptglab.com)  
W: [ptglab.com](http://ptglab.com)

This product is exclusively available under Proteintech Group brand and is not available to purchase from any other manufacturer.

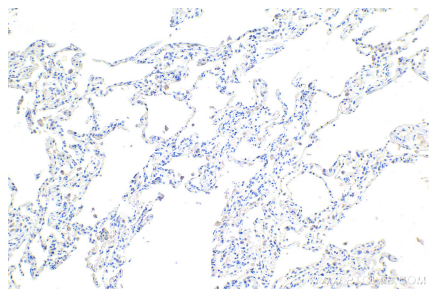
Selected Validation Data



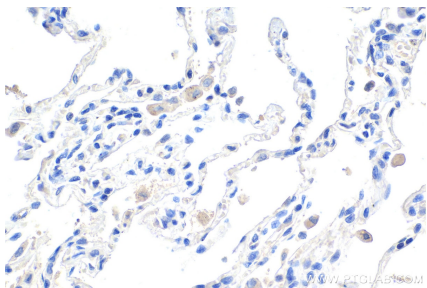
Various lysates were subjected to SDS PAGE followed by western blot with 68259-1-Ig (CHCHD3 antibody) at dilution of 1:20000 incubated at room temperature for 1.5 hours. This data was developed using the same antibody clone with 68259-1-PBS in a different storage buffer formulation.



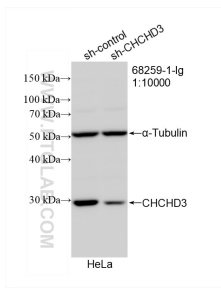
Immunofluorescent analysis of (-20°C Methanol) fixed MCF-7 cells using CHCHD3 antibody (68259-1-Ig, Clone: 1C8H12 ) at dilution of 1:800 and CoraLite®488-Conjugated AffiniPure Goat Anti-Mouse IgG(H+L). This data was developed using the same antibody clone with 68259-1-PBS in a different storage buffer formulation.



Immunohistochemical analysis of paraffin-embedded human lung tissue slide using 68259-1-Ig (CHCHD3 antibody) at dilution of 1:1000 (under 10x lens). Heat mediated antigen retrieval with Tris-EDTA buffer (pH 9.0). This data was developed using the same antibody clone with 68259-1-PBS in a different storage buffer formulation.



Immunohistochemical analysis of paraffin-embedded human lung tissue slide using 68259-1-Ig (CHCHD3 antibody) at dilution of 1:1000 (under 40x lens). Heat mediated antigen retrieval with Tris-EDTA buffer (pH 9.0). This data was developed using the same antibody clone with 68259-1-PBS in a different storage buffer formulation.



WB result of CHCHD3 antibody (68259-1-Ig; 1:10000; incubated at room temperature for 1.5 hours) with sh-Control and sh-CHCHD3 transfected HeLa cells. This data was developed using the same antibody clone with 68259-1-PBS in a different storage buffer formulation.