

For Research Use Only

CARD11 Monoclonal antibody

Catalog Number: 68269-1-Ig



Basic Information

Catalog Number: 68269-1-Ig	GenBank Accession Number: BC111719	Purification Method: Protein G purification
Size: 150ul , Concentration: 1000 µg/ml by Nanodrop;	GeneID (NCBI): 84433	CloneNo.: 3F5H6
Source: Mouse	Full Name: caspase recruitment domain family, member 11	Recommended Dilutions: WB 1:2000-1:10000
Isotype: IgG1	Calculated MW: 1154 aa, 133 kDa	
Immunogen Catalog Number: AG16468	Observed MW: 140 kDa	

Applications

Tested Applications:

WB, ELISA

Species Specificity:

Human

Positive Controls:

WB : MOLT-4 cells, Raji cells, Jurkat cells, K-562 cells

Background Information

CARD11 also named as ,BIMP3 or CARMA1, is a 1154 amino acid protein, which contains one PDZ domain, one guanylate kinase-like domain, and one CARD domain. CARD11 localizes in the cytoplasm and co-localized with DPP4 in membrane raft. CARD11 is detected in adult peripheral blood leukocytes, thymus, spleen and liver. CARD11 also is found in CARD11 promyelocytic leukemia HL-60 cells, chronic myelogenous leukemia K-562 cells, Burkitt's lymphoma Raji cells and colorectal adenocarcinoma SW480 cells. CARD11 is involved in the co-stimulatory signal essential for T-cell receptor mediated T-cell activation.

Storage

Storage:

Store at -20°C. Stable for one year after shipment.

Storage Buffer:

PBS with 0.02% sodium azide and 50% glycerol pH 7.3.

Aliquoting is unnecessary for -20°C storage

*** 20ul sizes contain 0.1% BSA

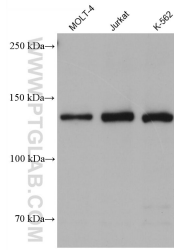
For technical support and original validation data for this product please contact:

T: 1 (888) 4PTGLAB (1-888-478-4522) (toll free in USA), or 1(312) 455-8498 (outside USA)

E: proteintech@ptglab.com
W: ptglab.com

This product is exclusively available under Proteintech Group brand and is not available to purchase from any other manufacturer.

Selected Validation Data



Various lysates were subjected to SDS PAGE followed by western blot with 68269-1-Ig (CARD11 antibody) at dilution of 1:5000 incubated at room temperature for 1.5 hours.