

For Research Use Only

RPS20 Monoclonal antibody

Catalog Number: 68270-1-Ig **2 Publications**



Basic Information

Catalog Number: 68270-1-Ig	GenBank Accession Number: BC007507	Purification Method: Protein G purification
Size: 150ul , Concentration: 1000 ug/ml by Nanodrop;	GeneID (NCBI): 6224	CloneNo.: 3E9B4
Source: Mouse	UNIPROT ID: P60866	Recommended Dilutions: WB 1:5000-1:50000 IHC 1:500-1:2000 IF/ICC 1:750-1:3000
Isotype: IgG1	Full Name: ribosomal protein S20	
Immunogen Catalog Number: AG8275	Calculated MW: 13 kDa	
	Observed MW: 16 kDa	

Applications

Tested Applications: WB, IHC, IF/ICC, ELISA	Positive Controls:
Cited Applications: IF	WB : Jurkat cells, HeLa cells, K-562 cells, HSC-T6 cells, NIH/3T3 cells, HEK-293 cells
Species Specificity: Human, mouse, rat	IHC : human breast cancer tissue,
Cited Species: human	IF/ICC : HeLa cells,
Note-IHC: suggested antigen retrieval with TE buffer pH 9.0; (*) Alternatively, antigen retrieval may be performed with citrate buffer pH 6.0	

Background Information

Ribosomes, the organelles that catalyze protein synthesis, consist of a small 40S subunit and a large 60S subunit. Together these subunits are composed of 4 RNA species and approximately 80 structurally distinct proteins. RPS20 is a component of the 40S subunit. The protein belongs to the S10P family of ribosomal proteins. It is located in the cytoplasm.

Notable Publications

Author	Pubmed ID	Journal	Application
Joanna R Kovalski	39905246	Nat Cell Biol	IF
Joanna R Kovalski	39416102	bioRxiv	IF

Storage

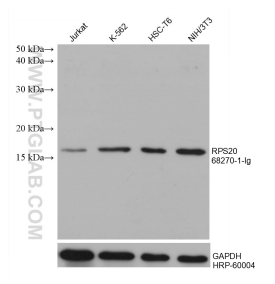
Storage:
Store at -20°C. Stable for one year after shipment.
Storage Buffer:
PBS with 0.02% sodium azide and 50% glycerol pH 7.3.
Aliquoting is unnecessary for -20°C storage

*** 20ul sizes contain 0.1% BSA

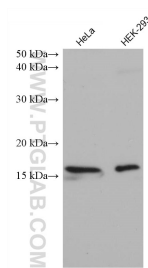
For technical support and original validation data for this product please contact:
T: 1 (888) 4PTGLAB (1-888-478-4522) (toll free in USA), or 1(312) 455-8498 (outside USA)
E: proteintech@ptglab.com
W: ptglab.com

This product is exclusively available under Proteintech Group brand and is not available to purchase from any other manufacturer.

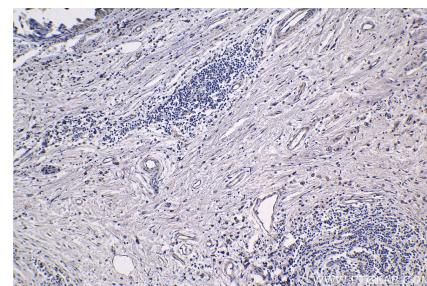
Selected Validation Data



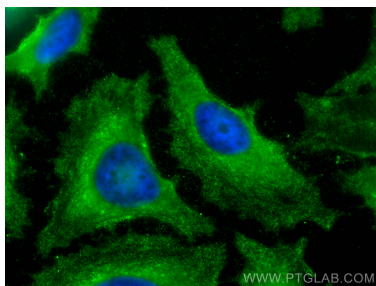
Various lysates were subjected to SDS PAGE followed by western blot with 68270-1-Ig (RPS20 antibody) at dilution of 1:10000 incubated at room temperature for 1.5 hours. The membrane was stripped and reblotted with HRP-conjugated GAPDH Monoclonal antibody (HRP-60004) as loading control.



Various lysates were subjected to SDS PAGE followed by western blot with 68270-1-Ig (RPS20 antibody) at dilution of 1:10000 incubated at room temperature for 1.5 hours.



Immunohistochemical analysis of paraffin-embedded human breast cancer tissue slide using 68270-1-Ig (RPS20 antibody) at dilution of 1:1000 (under 10x lens).



Immunofluorescent analysis of (-20°C Methanol) fixed HeLa cells using RPS20 antibody (68270-1-Ig, Clone: 3E9B4) at dilution of 1:1500 and CoraLite®488-Conjugated Goat Anti-Mouse IgG(H+L).