

For Research Use Only

# MAP4 Monoclonal antibody

Catalog Number: 68271-1-Ig



## Basic Information

<b>Catalog Number:</b> 68271-1-Ig	<b>GenBank Accession Number:</b> BC012794	<b>Purification Method:</b> Protein G purification
<b>Size:</b> 150ul , Concentration: 500 µg/ml by Nanodrop;	<b>GeneID (NCBI):</b> 4134	<b>CloneNo.:</b> 1C1A6
<b>Source:</b> Mouse	<b>Full Name:</b> microtubule-associated protein 4	<b>Recommended Dilutions:</b> WB 1:5000-1:50000 IHC 1:500-1:2000
<b>Isotype:</b> IgG1	<b>Calculated MW:</b> 121 kDa	
<b>Immunogen Catalog Number:</b> AG1741	<b>Observed MW:</b> 210-240 kDa	

## Applications

### Tested Applications:

IHC, WB, ELISA

### Species Specificity:

Human

**Note-IHC: suggested antigen retrieval with TE buffer pH 9.0; (\*) Alternatively, antigen retrieval may be performed with citrate buffer pH 6.0**

### Positive Controls:

**WB:** NCCIT cells, LNCaP cells, HeLa cells, HEK-293 cells, Jurkat cells, MOLT-4 cells

**IHC:** human lung cancer tissue,

## Background Information

MAP4 is a ubiquitously expressed microtubule-associated protein involved in the organization and stabilization of microtubules during various cellular activities. Recently it has been reported that expression of MAP4 was upregulated in esophageal squamous cell carcinoma (ESCC). MAP4 has been considered as an independent prognostic factor for ESCC. The predicted molecular weight of MAP4 is about 120 kDa, while higher molecular weight around 200-250 kDa is usually observed in WB test, which may be the result of glycosylation. (26876215, 8647865)

## Storage

### Storage:

Store at -20°C. Stable for one year after shipment.

### Storage Buffer:

PBS with 0.02% sodium azide and 50% glycerol pH 7.3.

Aliquoting is unnecessary for -20°C storage

**\*\*\* 20ul sizes contain 0.1% BSA**

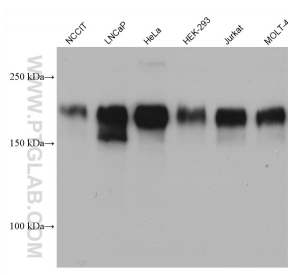
For technical support and original validation data for this product please contact:

T: 1 (888) 4PTGLAB (1-888-478-4522) (toll free in USA), or 1(312) 455-8498 (outside USA)

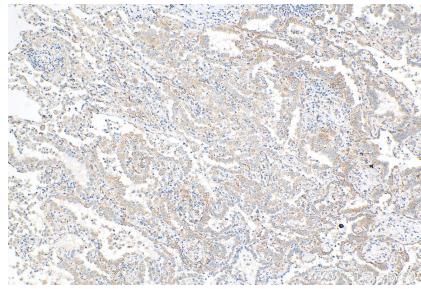
E: proteintech@ptglab.com  
W: ptglab.com

**This product is exclusively available under Proteintech Group brand and is not available to purchase from any other manufacturer.**

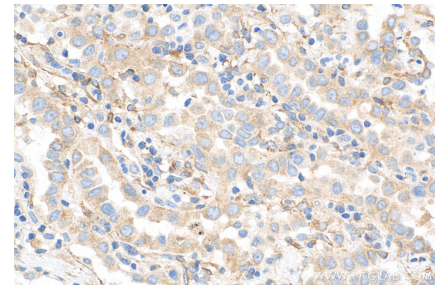
## Selected Validation Data



Various lysates were subjected to SDS PAGE followed by western blot with 68271-1-Ig (MAP4 antibody) at dilution of 1:20000 incubated at room temperature for 1.5 hours.



Immunohistochemical analysis of paraffin-embedded human lung cancer tissue slide using 68271-1-Ig (MAP4 antibody) at dilution of 1:1000 (under 10x lens). Heat mediated antigen retrieval with Tris-EDTA buffer (pH 9.0).



Immunohistochemical analysis of paraffin-embedded human lung cancer tissue slide using 68271-1-Ig (MAP4 antibody) at dilution of 1:1000 (under 40x lens). Heat mediated antigen retrieval with Tris-EDTA buffer (pH 9.0).