

For Research Use Only

FC of IgG Monoclonal antibody

Catalog Number: 68275-1-Ig



Basic Information

Catalog Number:

68275-1-Ig

GenBank Accession Number:

GeneID (NCBI):

Size:

150ul , Concentration: 1000 ug/ml by
Nanodrop;

Full Name:

Observed MW:

55 kDa

Source:

Mouse

Isotype:

IgG1

Immunogen Catalog Number:

EG0212

Purification Method:

Protein G purification

CloneNo.:

1A12C11

Recommended Dilutions:

WB 1:5000-1:50000

Applications

Tested Applications:

WB, ELISA

Species Specificity:

Human

Positive Controls:

WB : human plasma,

Background Information

Immunoglobulin G (IgG) is one of the most abundant proteins in human serum, accounting for about 10-20% of plasma protein. IgG FC is a homodimer that is composed of the constant region of the two heavy chains that form the IgG molecule. This antibody detects the human IgG FC heavy chain.

Storage

Storage:

Store at -20°C. Stable for one year after shipment.

Storage Buffer:

PBS with 0.02% sodium azide and 50% glycerol pH 7.3.

Aliquoting is unnecessary for -20°C storage

*** 20ul sizes contain 0.1% BSA

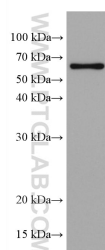
For technical support and original validation data for this product please contact:

T: 1 (888) 4PTGLAB (1-888-478-4522) (toll free
in USA), or 1(312) 455-8498 (outside USA)

E: proteintech@ptglab.com
W: ptglab.com

This product is exclusively available under Proteintech Group brand and is not available to purchase from any other manufacturer.

Selected Validation Data



human plasma were subjected to SDS PAGE followed by western blot with 68275-1-Ig (FC of Human IgG antibody) at dilution of 1:40000 incubated at room temperature for 1.5 hours.