

For Research Use Only

CRTAC1 Monoclonal antibody

Catalog Number: 68276-1-Ig



Basic Information

Catalog Number: 68276-1-Ig	GenBank Accession Number: BC034245	Purification Method: Protein A purification
Size: 150ul , Concentration: 1000 ug/ml by Nanodrop;	GeneID (NCBI): 55118	CloneNo.: 2A11E2
Source: Mouse	UNIPROT ID: Q9NQ79	Recommended Dilutions: WB 1:1000-1:4000 IF/ICC 1:400-1:1600
Isotype: IgG2b	Full Name: cartilage acidic protein 1	
Immunogen Catalog Number: AG32813	Calculated MW: 661 aa, 71 kDa	
	Observed MW: 71 kDa	

Applications

Tested Applications: WB, IF/ICC, ELISA	Positive Controls:
Species Specificity: Human, rat, mouse, rabbit, pig	WB : pig brain tissue, rabbit brain tissue, rat brain tissue, mouse brain tissue, rabbit cerebellum tissue
	IF/ICC : HeLa cells,

Background Information

CRTAC1 (cartilage acidic protein 1) is also named as ASPIC1 and CEP68. CRTAC1 is an extracellular matrix protein of human chondrogenic tissue. CRTAC1 promotes cell proliferation, migration and extracellular matrix regeneration and remodeling in primary human fibroblasts (PMID:32084494). CRTAC1 expression is decreased in tissue samples of bladder urothelial carcinoma (PMID:34818994). CRTAC1 overexpression promotes the pyroptosis of human lens epithelial cells by facilitating the reactive oxygen species (ROS) production in the formation of cataract (PMID:32838966). CRTAC1 was the most compelling and robust biomarker for osteoarthritis severity and progression (PMID:35924962).

Storage

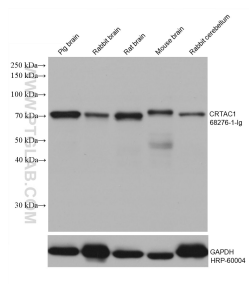
Storage:
Store at -20°C. Stable for one year after shipment.
Storage Buffer:
PBS with 0.02% sodium azide and 50% glycerol pH 7.3.
Aliquoting is unnecessary for -20°C storage

*** 20ul sizes contain 0.1% BSA

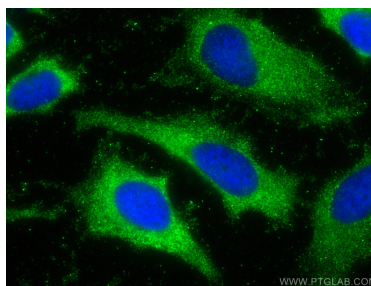
For technical support and original validation data for this product please contact:
T: 1 (888) 4PTGLAB (1-888-478-4522) (toll free in USA), or 1(312) 455-8498 (outside USA)
E: proteintech@ptglab.com
W: ptglab.com

This product is exclusively available under Proteintech Group brand and is not available to purchase from any other manufacturer.

Selected Validation Data



Various lysates were subjected to SDS PAGE followed by western blot with 68276-1-Ig (CRTAC1 antibody) at dilution of 1:2000 incubated at room temperature for 1.5 hours. The membrane was stripped and reblotted with HRP-conjugated GAPDH Monoclonal antibody (HRP-60004) as loading control.



Immunofluorescent analysis of (-20°C Ethanol) fixed HeLa cells using CRTAC1 antibody (68276-1-Ig, Clone: 2A11E2) at dilution of 1:800 and CoraLite®488-Conjugated Goat Anti-Mouse IgG(H+L).