

For Research Use Only

# BDH2 Monoclonal antibody

Catalog Number: **68279-1-Ig** **Featured Product**



## Basic Information

<b>Catalog Number:</b> 68279-1-Ig	<b>GenBank Accession Number:</b> BC095414	<b>Purification Method:</b> Protein G purification
<b>Size:</b> 150ul , Concentration: 1000 ug/ml by Nanodrop;	<b>GeneID (NCBI):</b> 56898	<b>CloneNo.:</b> 1B6H5
<b>Source:</b> Mouse	<b>UNIPROT ID:</b> Q9BUT1	<b>Recommended Dilutions:</b> WB 1:5000-1:50000 IF/ICC 1:200-1:800
<b>Isotype:</b> IgG1	<b>Full Name:</b> 3-hydroxybutyrate dehydrogenase, type 2	
<b>Immunogen Catalog Number:</b> AG26108	<b>Observed MW:</b> 27 kDa	

## Applications

<b>Tested Applications:</b> WB, IF/ICC, ELISA	<b>Positive Controls:</b>
<b>Species Specificity:</b> Human	<b>WB :</b> BxPC-3 cells, HeLa cells, HEK-293 cells, HepG2 cells, Jurkat cells <b>IF/ICC :</b> HepG2 cells,

## Background Information

Cytosolic type 2-hydroxybutyrate dehydrogenase, BDH2, originally named DHRS6, plays a physiological role in the cytosolic utilization of ketone bodies, which can subsequently enter mitochondria and the tricarboxylic acid cycle (PMID: 16380372). Moreover, BDH2 catalyzes the production of 2, 3-DHBA during enterobactin biosynthesis and participates in 24p3 (LCN2)-mediated iron transport and apoptosis (PMID: 23150981). It has 3 isoforms with molecular weights of 27, 19, and 16 kDa.

## Storage

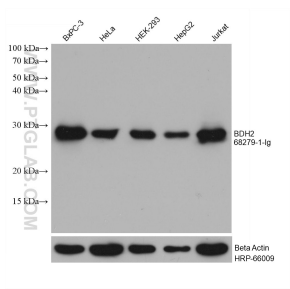
**Storage:**  
Store at -20°C. Stable for one year after shipment.  
**Storage Buffer:**  
PBS with 0.02% sodium azide and 50% glycerol pH 7.3.  
**Aliquoting is unnecessary for -20°C storage**

\*\*\* 20ul sizes contain 0.1% BSA

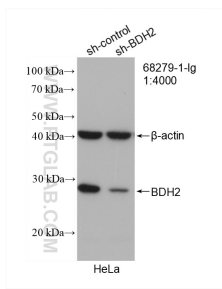
For technical support and original validation data for this product please contact:  
T: 1 (888) 4PTGLAB (1-888-478-4522) (toll free in USA), or 1(312) 455-8498 (outside USA)  
E: [proteintech@ptglab.com](mailto:proteintech@ptglab.com)  
W: [ptglab.com](http://ptglab.com)

This product is exclusively available under Proteintech Group brand and is not available to purchase from any other manufacturer.

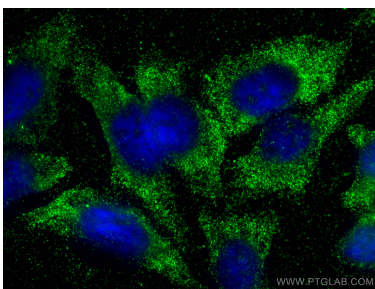
## Selected Validation Data



Various lysates were subjected to SDS PAGE followed by western blot with 68279-1-Ig (BDH2 antibody) at dilution of 1:10000 and incubated at room temperature for 1.5 hours. The membrane was stripped and reblotted with HRP-conjugated Beta Actin Monoclonal antibody (HRP-66009) as loading control.



WB result of BDH2 antibody (68279-1-Ig: 1:4000; incubated at room temperature for 1.5 hours) with sh-Control and sh-BDH2 transfected HeLa cells.



Immunofluorescent analysis of (-20°C Ethanol) fixed HepG2 cells using BDH2 antibody (68279-1-Ig, Clone: 1B6H5 ) at dilution of 1:400 and CoraLite®488-Conjugated Goat Anti-Mouse IgG(H+L).