

For Research Use Only

RABEP1 Monoclonal antibody

Catalog Number: 68285-1-Ig



Basic Information

Catalog Number: 68285-1-Ig	GenBank Accession Number: BC041700	Purification Method: Protein G purification
Size: 150ul , Concentration: 1000 ug/ml by Nanodrop;	GeneID (NCBI): 9135	CloneNo.: 1E7E11
Source: Mouse	UNIPROT ID: Q15276	Recommended Dilutions: WB 1:5000-1:50000 IF/ICC 1:200-1:800
Isotype: IgG1	Full Name: rabaptin, RAB GTPase binding effector protein 1	
Immunogen Catalog Number: AG6023	Calculated MW: 99 kDa	
	Observed MW: 100-105 kDa	

Applications

Tested Applications: WB, IF/ICC, ELISA	Positive Controls:
Species Specificity: Human, Mouse, Rat, Rabbit, Pig	WB : pig brain tissue, pig cerebellum tissue, rabbit brain tissue, rabbit cerebellum tissue, rat brain tissue, rat cerebellum tissue, mouse brain tissue, mouse cerebellum tissue
	IF/ICC : HeLa cells,

Background Information

Rab GTPase-binding effector protein 1 is an enzyme that in humans is encoded by the RABEP1 gene. It belongs to rabaptin protein family. RABEP1 act as linker between gamma-adaptin, RAB4A and RAB5A. It is involved in endocytic membrane fusion and membrane trafficking of recycling endosomes. (PMID: 22841712)

Storage

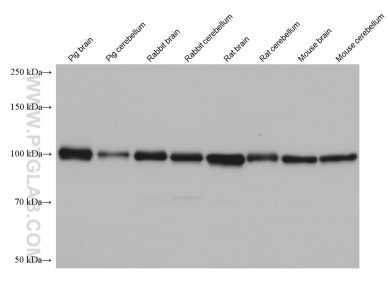
Storage:
Store at -20°C. Stable for one year after shipment.
Storage Buffer:
PBS with 0.02% sodium azide and 50% glycerol pH 7.3.
Aliquoting is unnecessary for -20°C storage

*** 20ul sizes contain 0.1% BSA

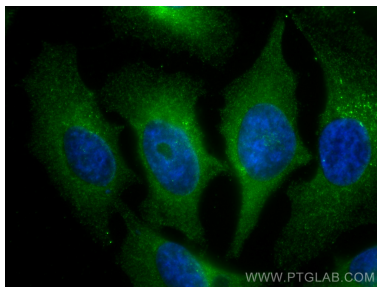
For technical support and original validation data for this product please contact:
T: 1 (888) 4PTGLAB (1-888-478-4522) (toll free in USA), or 1(312) 455-8498 (outside USA)
E: proteintech@ptglab.com
W: ptglab.com

This product is exclusively available under Proteintech Group brand and is not available to purchase from any other manufacturer.

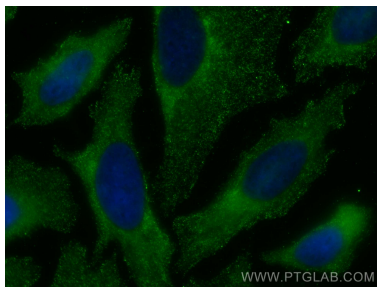
Selected Validation Data



Various lysates were subjected to SDS PAGE followed by western blot with 68285-1-Ig (RABEP1 antibody) at dilution of 1:20000 incubated at room temperature for 1.5 hours.



Immunofluorescent analysis of (-20°C Methanol) fixed HeLa cells using RABEP1 antibody (68285-1-Ig, Clone: 1E7E11) at dilution of 1:400 and CoraLite®488-Conjugated AffiniPure Goat Anti-Mouse IgG(H+L).



Immunofluorescent analysis of (-20°C Methanol) fixed HeLa cells using RABEP1 antibody (68285-1-Ig, Clone: 1E7E11) at dilution of 1:800 and CoraLite®488-Conjugated AffiniPure Goat Anti-Mouse IgG(H+L).