

For Research Use Only

# SERCA3 Monoclonal antibody

Catalog Number: 68287-1-Ig



## Basic Information

<b>Catalog Number:</b> 68287-1-Ig	<b>GenBank Accession Number:</b> BC035729	<b>Purification Method:</b> Protein G purification
<b>Size:</b> 150ul , Concentration: 1000 µg/ml by Nanodrop;	<b>GeneID (NCBI):</b> 489	<b>CloneNo.:</b> 1A2C2
<b>Source:</b> Mouse	<b>Full Name:</b> ATPase, Ca++ transporting, ubiquitous	<b>Recommended Dilutions:</b> WB 1:5000-1:50000
<b>Isotype:</b> IgG1	<b>Calculated MW:</b> 1043 aa, 114 kDa	
<b>Immunogen Catalog Number:</b> AG4527	<b>Observed MW:</b> 97-110 kDa	

## Applications

**Tested Applications:**  
WB, ELISA

**Species Specificity:**  
Human, mouse, rat

**Positive Controls:**

**WB :** HepG2 cells, mouse heart tissue, MOLT-4 cells,  
Jurkat cells, K-562 cells, HL-60 cells, rat heart tissue

## Background Information

The SERCA, which pumps cytosolic Ca<sup>2+</sup> into the ER, is an imperative maintainer of ER Ca<sup>2+</sup> homeostasis. The mammalian SERCA family is comprised of three tissue-specific members, SERCA1-3. SERCA3 is present in endothelial and epithelial cells of various tissues. SERCA3 helps regulate intracellular Ca<sup>2+</sup>, which is critical for maintaining normal INS secretion and is closely linked to metabolism, neuronal plasticity, gene transcription, cell growth, differentiation, apoptosis, protein folding and carcinogenesis. Several isoforms of SERCA3 exist due to the alternative splicing.

## Storage

**Storage:**

Store at -20°C. Stable for one year after shipment.

**Storage Buffer:**

PBS with 0.02% sodium azide and 50% glycerol pH 7.3.

Aliquoting is unnecessary for -20°C storage

\*\*\* 20ul sizes contain 0.1% BSA

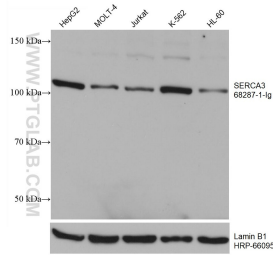
For technical support and original validation data for this product please contact:

T: 1 (888) 4PTGLAB (1-888-478-4522) (toll free  
in USA), or 1(312) 455-8498 (outside USA)

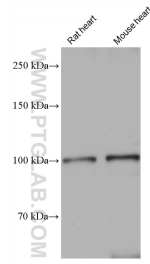
E: [proteintech@ptglab.com](mailto:proteintech@ptglab.com)  
W: [ptglab.com](http://ptglab.com)

This product is exclusively available under Proteintech Group brand and is not available to purchase from any other manufacturer.

## Selected Validation Data



Various lysates were subjected to SDS PAGE followed by western blot with 68287-1-Ig (ATP2A3 antibody) at dilution of 1:10000 incubated at room temperature for 1.5 hours. The membrane was stripped and reblotted with HRP-conjugated Lamin B1 Monoclonal antibody (HRP-66095) as loading control.



Various lysates were subjected to SDS PAGE followed by western blot with 68287-1-Ig (ATP2A3 antibody) at dilution of 1:10000 incubated at room temperature for 1.5 hours.