

For Research Use Only

# RFC3 Monoclonal antibody, PBS Only



Catalog Number: 68290-1-PBS

## Basic Information

<b>Catalog Number:</b> 68290-1-PBS	<b>GenBank Accession Number:</b> BC000149	<b>Purification Method:</b> Protein G purification
<b>Size:</b> 100ug , Concentration: 1 mg/ml by Nanodrop;	<b>GeneID (NCBI):</b> 5983	<b>CloneNo.:</b> 2G3A8
<b>Source:</b> Mouse	<b>UNIPROT ID:</b> P40938	
<b>Isotype:</b> IgG1	<b>Full Name:</b> replication factor C (activator 1) 3, 38kDa	
<b>Immunogen Catalog Number:</b> AG28365	<b>Calculated MW:</b> 40 aa, 6 kDa	
	<b>Observed MW:</b> 38 kDa	

## Applications

**Tested Applications:**  
WB, Indirect ELISA

**Species Specificity:**  
Human, Mouse, Rat

## Background Information

RFC3, also known as RFC38, is a 356 amino acid protein, which localizes in the nucleus. Replication factor C (RFC) is a component of the eukaryotic DNA polymerase. In all eukaryotic cell cycles, it is essential for DNA duplication, DNA injury repair, and checkpoint control. RFC consists of five subunits (RFC1-5). The interrelationships between RFC2, RFC3, and the c-MYC oncogene (transcription factor) can induce cell division and proliferation. RFC3 is associated with liver, breast, esophageal and ovarian cancer, and serves a critical role in cellular proliferation, invasion, and metastasis. RFC3 exists in two isoforms with molecular weights of 34 kDa and 38-40 kDa.

## Storage

**Storage:**  
Store at -80°C.

**Storage Buffer:**  
PBS Only

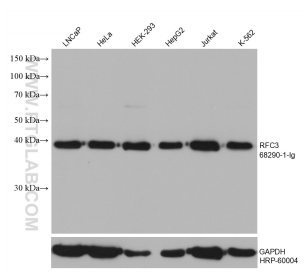
For technical support and original validation data for this product please contact:

T: 1 (888) 4PTGLAB (1-888-478-4522) (toll free in USA), or 1(312) 455-8498 (outside USA)

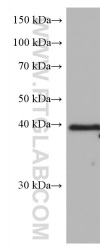
E: [proteintech@ptglab.com](mailto:proteintech@ptglab.com)  
W: [ptglab.com](http://ptglab.com)

**This product is exclusively available under Proteintech Group brand and is not available to purchase from any other manufacturer.**

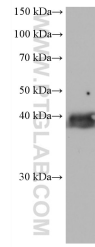
## Selected Validation Data



Various lysates were subjected to SDS PAGE followed by western blot with 68290-1-Ig (RFC3 antibody) at dilution of 1:10000 and incubated at room temperature for 1.5 hours. The membrane was stripped and reblotted with HRP-conjugated GAPDH Monoclonal antibody (HRP-60004) as loading control. This data was developed using the same antibody clone with 68290-1-PBS in a different storage buffer formulation.



NIH/3T3 cells were subjected to SDS PAGE followed by western blot with 68290-1-Ig (RFC3 antibody) at dilution of 1:10000 incubated at room temperature for 1.5 hours. This data was developed using the same antibody clone with 68290-1-PBS in a different storage buffer formulation.



HSC-T6 cells were subjected to SDS PAGE followed by western blot with 68290-1-Ig (RFC3 antibody) at dilution of 1:10000 incubated at room temperature for 1.5 hours. This data was developed using the same antibody clone with 68290-1-PBS in a different storage buffer formulation.