

For Research Use Only

SNX3 Monoclonal antibody

Catalog Number: 68292-1-Ig



Basic Information

Catalog Number: 68292-1-Ig	GenBank Accession Number: BC008444	Purification Method: Protein G purification
Size: 150ul , Concentration: 1000 µg/ml by Nanodrop;	GeneID (NCBI): 8724	CloneNo.: 2B5B7
Source: Mouse	Full Name: sorting nexin 3	Recommended Dilutions: WB 1:5000-1:50000
Isotype: IgG1	Calculated MW: 19 kDa	
Immunogen Catalog Number: AG1160	Observed MW: 16-20 kDa	

Applications

Tested Applications: WB, ELISA	Positive Controls:
Species Specificity: Human, Mouse, Rat	WB : HeLa cells, HepG2 cells, Jurkat cells, K-562 cells, HSC-T6 cells, NIH/3T3 cells

Background Information

SNX3 is a member of the sorting nexin family of proteins regulating membrane traffic. SNX3 regulates endosomal function through its PX (phox homology)-domain-mediated interaction with PtdIns(3)P (PMID: 11433298). It is a potential regulator of neurite formation and may play an important role in the development and function of the central nervous system (PMID: 19576982; 20817026).

Storage

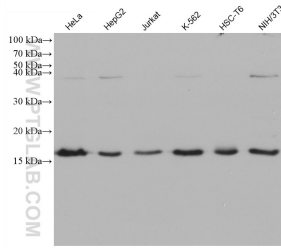
Storage:
Store at -20°C. Stable for one year after shipment.
Storage Buffer:
PBS with 0.02% sodium azide and 50% glycerol pH 7.3.
Aliquoting is unnecessary for -20°C storage

*** 20ul sizes contain 0.1% BSA

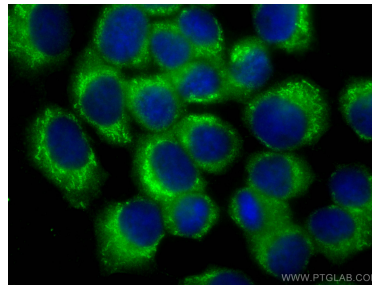
For technical support and original validation data for this product please contact:
T: 1 (888) 4PTGLAB (1-888-478-4522) (toll free in USA), or 1(312) 455-8498 (outside USA) E: proteintech@ptglab.com W: ptglab.com

This product is exclusively available under Proteintech Group brand and is not available to purchase from any other manufacturer.

Selected Validation Data



Various lysates were subjected to SDS PAGE followed by western blot with 68292-1-Ig (SNX3 antibody) at dilution of 1:20000 incubated at room temperature for 1.5 hours.



Immunofluorescent analysis of (-20°C Methanol) fixed A431 cells using SNX3 antibody (68292-1-Ig, Clone: 2B5B7) at dilution of 1:800 and CoraLite®488-Conjugated AffiniPure Goat Anti-Mouse IgG(H+L).