

For Research Use Only

Cytokeratin 5/6 Monoclonal antibody, PBS Only



Catalog Number: 68295-1-PBS

Basic Information

Catalog Number: 68295-1-PBS	GenBank Accession Number: BC034535	Purification Method: Protein G purification
Size: 100ug , Concentration: 1mg/ml by Nanodrop;	GeneID (NCBI): 3854	CloneNo.: 1F9E1
Source: Mouse	UNIPROT ID: P04259	
Isotype: IgG1	Full Name: keratin 6B	
Immunogen Catalog Number: AG11288	Calculated MW: 564 aa, 60 kDa	
	Observed MW: 60 kDa	

Applications

Tested Applications:
WB, IHC, IF/ICC, IF-P, Indirect ELISA

Species Specificity:
human, mouse, rat

Background Information

Keratins are a large family of proteins that form the intermediate filament cytoskeleton of epithelial cells, which are classified into two major sequence types. Type I keratins are a group of acidic intermediate filament proteins, including K9-K23, and the hair keratins Ha1-Ha8. Type II keratins are the basic or neutral counterparts to the acidic type I keratins, including K1-K8, and the hair keratins, Hb1-Hb6. This antibody can react with Cytokeratin 5 and Cytokeratin 6.

Storage

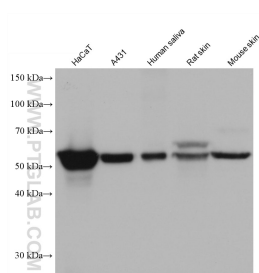
Storage:
Store at -80°C.

Storage Buffer:
PBS Only

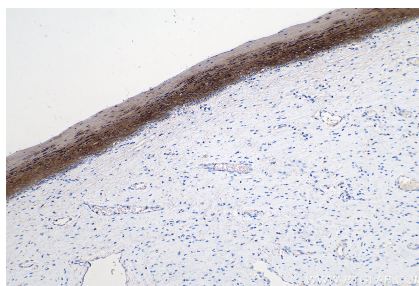
For technical support and original validation data for this product please contact:
T: 1 (888) 4PTGLAB (1-888-478-4522) (toll free in USA), or 1(312) 455-8498 (outside USA)
E: proteintech@ptglab.com
W: ptglab.com

This product is exclusively available under Proteintech Group brand and is not available to purchase from any other manufacturer.

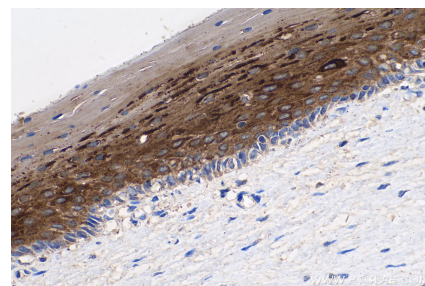
Selected Validation Data



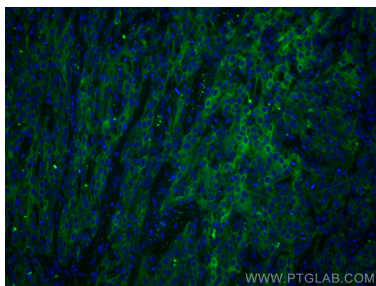
Various lysates were subjected to SDS PAGE followed by western blot with 68295-1-Ig (Cytokeratin 5/6 antibody) at dilution of 1:10000 incubated at room temperature for 1.5 hours. This data was developed using the same antibody clone with 68295-1-PBS in a different storage buffer formulation.



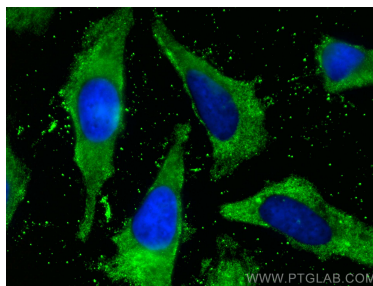
Immunohistochemical analysis of paraffin-embedded human cervical cancer tissue slide using 68295-1-Ig (Cytokeratin 5/6 antibody) at dilution of 1:2300 (under 10x lens). Heat mediated antigen retrieval with Tris-EDTA buffer (pH 9.0). This data was developed using the same antibody clone with 68295-1-PBS in a different storage buffer formulation.



Immunohistochemical analysis of paraffin-embedded human cervical cancer tissue slide using 68295-1-Ig (Cytokeratin 5/6 antibody) at dilution of 1:2300 (under 40x lens). Heat mediated antigen retrieval with Tris-EDTA buffer (pH 9.0). This data was developed using the same antibody clone with 68295-1-PBS in a different storage buffer formulation.



Immunofluorescent analysis of (4% PFA) fixed human cervical cancer tissue using Cytokeratin 5/6 antibody (68295-1-Ig, Clone: 1F9E1) at dilution of 1:400 and CoraLite®488-Conjugated AffiniPure Goat Anti-Mouse IgG(H+L). This data was developed using the same antibody clone with 68295-1-PBS in a different storage buffer formulation.



Immunofluorescent analysis of (-20°C Methanol) fixed HeLa cells using Cytokeratin 5/6 antibody (68295-1-Ig, Clone: 1F9E1) at dilution of 1:800 and CoraLite®488-Conjugated AffiniPure Goat Anti-Mouse IgG(H+L). This data was developed using the same antibody clone with 68295-1-PBS in a different storage buffer formulation.