

For Research Use Only

# Cardiac Troponin T Monoclonal antibody, PBS Only (Capture)

Catalog Number: 68300-1-PBS



## Basic Information

<b>Catalog Number:</b> 68300-1-PBS	<b>GenBank Accession Number:</b> BC002653	<b>Purification Method:</b> Protein G purification
<b>Size:</b> 100ug , Concentration: 1 mg/ml by Nanodrop;	<b>GeneID (NCBI):</b> 7139	<b>CloneNo.:</b> 4E2D8
<b>Source:</b> Mouse	<b>UNIPROT ID:</b> P45379	
<b>Isotype:</b> IgG1	<b>Full Name:</b> troponin T type 2 (cardiac)	
<b>Immunogen Catalog Number:</b> AG7716	<b>Calculated MW:</b> 36 kDa	
	<b>Observed MW:</b> 34-40 kDa	

## Applications

**Tested Applications:**  
WB, IHC, IF/ICC, IF-P, Cytometric bead array, Indirect ELISA

**Species Specificity:**  
human, mouse, rat, pig, rabbit, chicken

## Product Information

68300-1-PBS targets Cardiac Troponin T as part of a matched antibody pair:

MP50338-1: 68300-1-PBS capture and 68300-2-PBS detection (validated in Cytometric bead array)

Unconjugated mouse monoclonal antibody pair in PBS only (BSA and azide free) storage buffer at a concentration of 1 mg/mL, ready for conjugation.

This conjugation ready format makes antibodies ideal for use in many applications including: ELISAs, multiplex assays requiring matched pairs, mass cytometry, and multiplex imaging applications. Antibody use should be optimized by the end user for each application and assay.

## Background Information

Cardiac Troponin T, also named as cTnT, TNNT2. This gene encodes the cardiac isoform of troponin T. The encoded protein is the tropomyosin-binding subunit of the troponin complex, which is located on the thin filament of striated muscles and regulates muscle contraction in response to alterations in intracellular calcium ion concentration. Mutations in this gene have been associated with familial hypertrophic cardiomyopathy as well as with dilated cardiomyopathy. Cardiac Troponin T can be detected as about 34-40 kDa.

## Storage

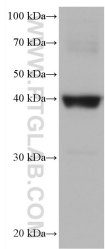
**Storage:**  
Store at -80°C.

**Storage Buffer:**  
PBS Only

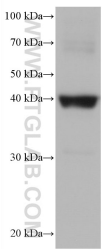
For technical support and original validation data for this product please contact:  
T: 1 (888) 4PTGLAB (1-888-478-4522) (toll free in USA), or 1(312) 455-8498 (outside USA)  
E: [proteintech@ptglab.com](mailto:proteintech@ptglab.com)  
W: [ptglab.com](http://ptglab.com)

This product is exclusively available under Proteintech Group brand and is not available to purchase from any other manufacturer.

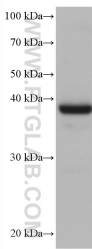
Selected Validation Data



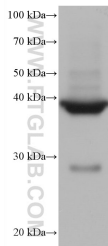
pig heart tissue were subjected to SDS PAGE followed by western blot with 68300-1-Ig (cTnT antibody) at dilution of 1:50000 incubated at room temperature for 1.5 hours. This data was developed using the same antibody clone with 68300-1-PBS in a different storage buffer formulation.



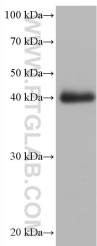
rabbit heart tissue were subjected to SDS PAGE followed by western blot with 68300-1-Ig (cTnT antibody) at dilution of 1:50000 incubated at room temperature for 1.5 hours. This data was developed using the same antibody clone with 68300-1-PBS in a different storage buffer formulation.



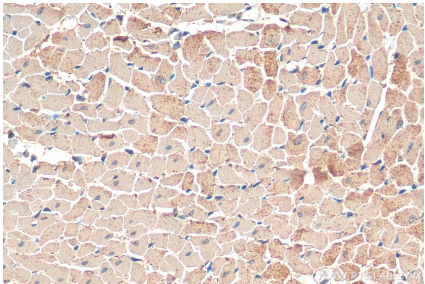
rat heart tissue were subjected to SDS PAGE followed by western blot with 68300-1-Ig (cTnT antibody) at dilution of 1:50000 incubated at room temperature for 1.5 hours. This data was developed using the same antibody clone with 68300-1-PBS in a different storage buffer formulation.



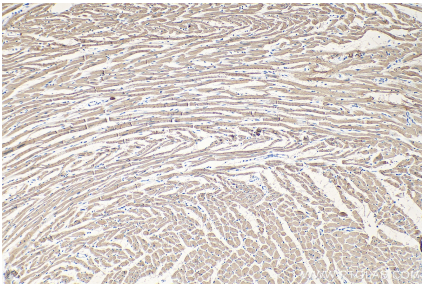
mouse heart tissue were subjected to SDS PAGE followed by western blot with 68300-1-Ig (cTnT antibody) at dilution of 1:50000 incubated at room temperature for 1.5 hours. This data was developed using the same antibody clone with 68300-1-PBS in a different storage buffer formulation.



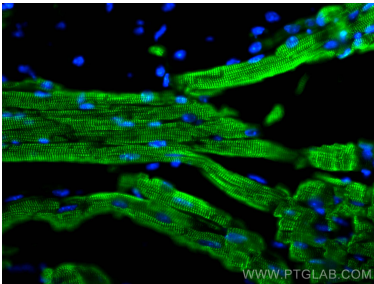
chicken heart tissue were subjected to SDS PAGE followed by western blot with 68300-1-Ig (cTnT antibody) at dilution of 1:50000 incubated at room temperature for 1.5 hours. This data was developed using the same antibody clone with 68300-1-PBS in a different storage buffer formulation.



Immunohistochemical analysis of paraffin-embedded rat heart tissue slide using 68300-1-Ig (Cardiac Troponin T antibody) at dilution of 1:6000 (under 40x lens). Heat mediated antigen retrieval with Tris-EDTA buffer (pH 9.0). This data was developed using the same antibody clone with 68300-1-PBS in a different storage buffer formulation.



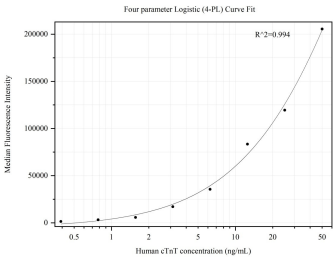
Immunohistochemical analysis of paraffin-embedded rat heart tissue slide using 68300-1-Ig (Cardiac Troponin T antibody) at dilution of 1:8000 (under 10x lens). Heat mediated antigen retrieval with Tris-EDTA buffer (pH 9.0). This data was developed using the same antibody clone with 68300-1-PBS in a different storage buffer formulation.



Immunofluorescent analysis of (4% PFA) fixed mouse heart tissue using cTnT antibody (68300-1-Ig, Clone: 4E2D8 ) at dilution of 1:400 and CoraLite®488-Conjugated AffiniPure Goat Anti-Mouse IgG(H+L). This data was developed using the same antibody clone with 68300-1-PBS in a different storage buffer formulation.



Immunofluorescent analysis of (4% PFA) fixed H9C2 cells using Cardiac Troponin T antibody (68300-1-Ig, Clone: 4E2D8 ) at dilution of 1:400 and CoraLite®488-Conjugated AffiniPure Goat Anti-Mouse IgG(H+L). This data was developed using the same antibody clone with 68300-1-PBS in a different storage buffer formulation.



Cytometric bead array standard curve of MP50338-1, cTnT Monoclonal Matched Antibody Pair, PBS Only. Capture antibody: 68300-1-PBS. Detection antibody: 68300-2-PBS. Standard:Ag7716. Range: 0.391-50 ng/mL