

For Research Use Only

ATP5F1 Monoclonal antibody

Catalog Number: 68304-1-Ig



Basic Information

Catalog Number: 68304-1-Ig	GenBank Accession Number: BC005366	Purification Method: Protein G purification
Size: 150ul , Concentration: 1000 µg/ml by Nanodrop;	GeneID (NCBI): 515	CloneNo.: 1A10G9
Source: Mouse	Full Name: ATP synthase, H+ transporting, mitochondrial F0 complex, subunit B1	Recommended Dilutions: WB 1:5000-1:50000 IF 1:200-1:800
Isotype: IgG1	Calculated MW: 256 aa, 29 kDa	
Immunogen Catalog Number: AG8571	Observed MW: 25-30 kDa	

Applications

Tested Applications:
IF, WB, ELISA

Species Specificity:
Human, Mouse, Rat

Positive Controls:

WB: A549 cells, LNCaP cells, HeLa cells, HEK-293 cells, Jurkat cells, K-562 cells, HSC-T6 cells, NIH/3T3 cells, 4T1 cells

IF: HeLa cells,

Background Information

ATP5F1(ATP synthase subunit b) belongs to the eukaryotic ATPase B chain family. The ATP5F1 gene encodes subunit B of the mitochondrial ATP synthase Fo unit, which contains 214-amino acid with a 42-amino acid import signal(PMID:1831354). Mitochondrial membrane ATP synthase(F1FO ATP synthase or Complex V) produces ATP from ADP in the presence of a proton gradient across the membrane which is generated by electron transport complexes of the respiratory chain.

Storage

Storage:
Store at -20°C. Stable for one year after shipment.

Storage Buffer:
PBS with 0.02% sodium azide and 50% glycerol pH 7.3.

Aliquoting is unnecessary for -20°C storage

*** 20ul sizes contain 0.1% BSA

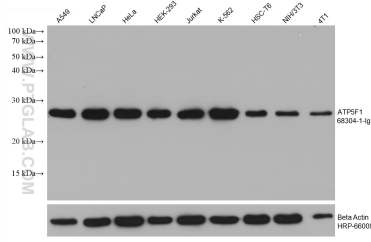
For technical support and original validation data for this product please contact:

T: 1 (888) 4PTGLAB (1-888-478-4522) (toll free in USA), or 1(312) 455-8498 (outside USA)

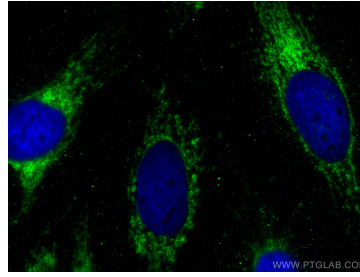
E: proteintech@ptglab.com
W: ptglab.com

This product is exclusively available under Proteintech Group brand and is not available to purchase from any other manufacturer.

Selected Validation Data



Various lysates were subjected to SDS PAGE followed by western blot with 68304-1-Ig (ATP5F1 antibody) at dilution of 1:20000 incubated at room temperature for 1.5 hours. The membrane was stripped and reblotted with HRP-conjugated Beta Actin Monoclonal antibody (HRP-66009) as loading control.



Immunofluorescent analysis of (-20°C Ethanol) fixed HeLa cells using ATP5F1 antibody (68304-1-Ig, Clone: 1A10G9) at dilution of 1:400 and CoraLite® 488-Conjugated AffiniPure Goat Anti-Mouse IgG(H+L).