

For Research Use Only

# ATP5F1 Monoclonal antibody, PBS Only



Catalog Number: 68304-1-PBS

## Basic Information

<b>Catalog Number:</b> 68304-1-PBS	<b>GenBank Accession Number:</b> BC005366	<b>Purification Method:</b> Protein G purification
<b>Size:</b> 100ug , Concentration: 1 mg/ml by Nanodrop;	<b>GeneID (NCBI):</b> 515	<b>CloneNo.:</b> 1A10G9
<b>Source:</b> Mouse	<b>UNIPROT ID:</b> P24539	
<b>Isotype:</b> IgG1	<b>Full Name:</b> ATP synthase, H <sup>+</sup> transporting, mitochondrial F <sub>0</sub> complex, subunit B1	
<b>Immunogen Catalog Number:</b> AG8571	<b>Calculated MW:</b> 256 aa, 29 kDa	
	<b>Observed MW:</b> 25-30 kDa	

## Applications

**Tested Applications:**  
WB, IF, Indirect ELISA

**Species Specificity:**  
Human, Mouse, Rat

## Background Information

ATP5F1(ATP synthase subunit b) belongs to the eukaryotic ATPase B chain family. The ATP5F1 gene encodes subunit B of the mitochondrial ATP synthase Fo unit, which contains 214-amino acid with a 42-amino acid import signal(PMID:1831354). Mitochondrial membrane ATP synthase(F<sub>1</sub>F<sub>0</sub> ATP synthase or Complex V) produces ATP from ADP in the presence of a proton gradient across the membrane which is generated by electron transport complexes of the respiratory chain.

## Storage

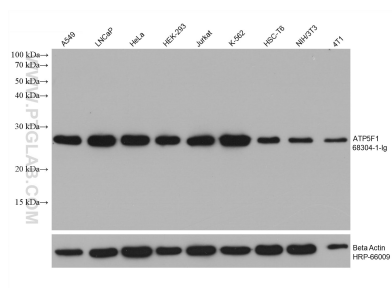
**Storage:**  
Store at -80°C.

**Storage Buffer:**  
PBS Only

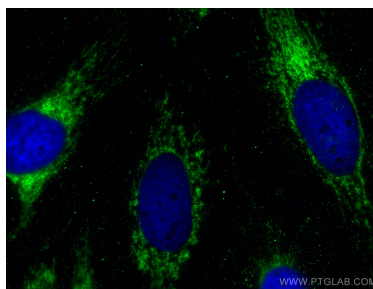
For technical support and original validation data for this product please contact:  
T: 1 (888) 4PTGLAB (1-888-478-4522) (toll free in USA), or 1(312) 455-8498 (outside USA)  
E: [proteintech@ptglab.com](mailto:proteintech@ptglab.com)  
W: [ptglab.com](http://ptglab.com)

This product is exclusively available under Proteintech Group brand and is not available to purchase from any other manufacturer.

## Selected Validation Data



Various lysates were subjected to SDS PAGE followed by western blot with 68304-1-Ig (ATP5F1 antibody) at dilution of 1:20000 incubated at room temperature for 1.5 hours. The membrane was stripped and reblotted with HRP-conjugated Beta Actin Monoclonal antibody (HRP-66009) as loading control. This data was developed using the same antibody clone with 68304-1-PBS in a different storage buffer formulation.



Immunofluorescent analysis of (-20°C Ethanol) fixed HeLa cells using ATP5F1 antibody (68304-1-Ig, Clone: 1A10G9) at dilution of 1:400 and CoraLite®488-Conjugated AffiniPure Goat Anti-Mouse IgG(H+L). This data was developed using the same antibody clone with 68304-1-PBS in a different storage buffer formulation.