

For Research Use Only

GTSE1 Monoclonal antibody

Catalog Number: 68313-1-Ig



Basic Information

Catalog Number:

68313-1-Ig

Size:

150ul, Concentration: 1000 ug/ml by Nanodrop;

Source:

Mouse

Isotype:

IgG1

Immunogen Catalog Number:

AG32817

GenBank Accession Number:

BC006325

GeneID (NCBI):

51512

UNIPROT ID:

Q9NYZ3

Full Name:

G-2 and S-phase expressed 1

Calculated MW:

77 kDa

Observed MW:

67 kDa

Purification Method:

Protein G purification

CloneNo.:

3B4A12

Recommended Dilutions:

WB 1:5000-1:50000

Applications

Tested Applications:

WB, ELISA

Species Specificity:

Human, Rat, mouse

Positive Controls:

WB : U2OS cells, Saos-2 cells, HeLa cells, HEK-293 cells, MDA-MB-231 cells, Jurkat cells, K-562 cells, HSC-T6 cells, 4T1 cells

Background Information

GTSE1 is only expressed in the S and G2 phases of the cell cycle, where it colocalizes with cytoplasmic tubulin and microtubules. In response to DNA damage, the encoded protein accumulates in the nucleus and binds the tumor suppressor protein p53, shutting it out of the nucleus and repressing its ability to induce apoptosis.

Storage

Storage:

Store at -20°C. Stable for one year after shipment.

Storage Buffer:

PBS with 0.02% sodium azide and 50% glycerol pH 7.3.

Aliquoting is unnecessary for -20°C storage

*** 20ul sizes contain 0.1% BSA

For technical support and original validation data for this product please contact:

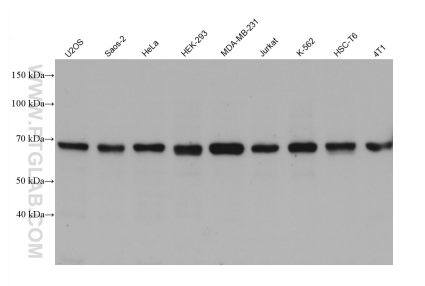
T: 1 (888) 4PTGLAB (1-888-478-4522) (toll free in USA), or 1(312) 455-8498 (outside USA)

E: proteintech@ptglab.com

W: ptglab.com

This product is exclusively available under Proteintech Group brand and is not available to purchase from any other manufacturer.

Selected Validation Data



Various lysates were subjected to SDS PAGE followed by western blot with 68313-1-Ig (GTSE1 antibody) at dilution of 1:10000 incubated at room temperature for 1.5 hours.