

For Research Use Only

# EXOSC10 Monoclonal antibody, PBS Only



Catalog Number: 68315-1-PBS

## Basic Information

<b>Catalog Number:</b> 68315-1-PBS	<b>GenBank Accession Number:</b> BC039901	<b>Purification Method:</b> Protein A purification
<b>Size:</b> 100ug , Concentration: 1 mg/ml by Nanodrop;	<b>GeneID (NCBI):</b> 5394	<b>CloneNo.:</b> 1D6G9
<b>Source:</b> Mouse	<b>UNIPROT ID:</b> Q01780	
<b>Isotype:</b> IgG1	<b>Full Name:</b> exosome component 10	
<b>Immunogen Catalog Number:</b> AG28587	<b>Calculated MW:</b> 98 kDa	
	<b>Observed MW:</b> 98 kDa	

## Applications

**Tested Applications:**  
WB, IP, IF, ELISA

**Species Specificity:**  
Human

## Background Information

About 50% of patients with polymyositis/scleroderma (PM-Scl) overlap syndrome are reported to have autoantibodies to a nuclear/nucleolar particle termed PM-Scl. Exosome component 10 (EXOSC10), also named autoantigen PM/Scl 2, is the 100 kDa antigen component of PM-Scl and is recognized by most sera of PM-Scl patients. EXOSC10 is strongly enriched in the nucleolus and a small amount has been found in cytoplasm supporting the existence of a nucleolar RNA exosome complex form. As a putative catalytic component of the RNA exosome complex which has 3'->5' exoribonuclease activity, EXOSC10 participates in a multitude of cellular RNA processing and degradation events.

## Storage

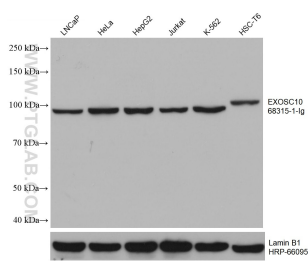
**Storage:**  
Store at -80°C.

**Storage Buffer:**  
PBS only

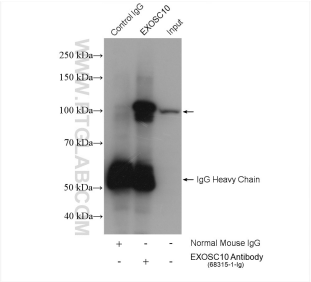
For technical support and original validation data for this product please contact:  
T: 1 (888) 4PTGLAB (1-888-478-4522) (toll free in USA), or 1(312) 455-8498 (outside USA)  
E: [proteintech@ptglab.com](mailto:proteintech@ptglab.com)  
W: [ptglab.com](http://ptglab.com)

This product is exclusively available under Proteintech Group brand and is not available to purchase from any other manufacturer.

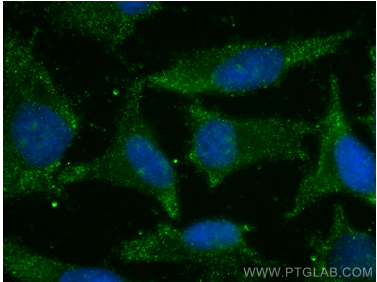
## Selected Validation Data



Various lysates were subjected to SDS PAGE followed by western blot with 68315-1-Ig (EXOSC10 antibody) at dilution of 1:10000 incubated at room temperature for 1.5 hours. The membrane was stripped and reblotted with HRP-conjugated Lamin B1 Monoclonal antibody (HRP-66095) as loading control. This data was developed using the same antibody clone with 68315-1-PBS in a different storage buffer formulation.



IP result of anti-EXOSC10 (IP: 68315-1-Ig, 4ug; Detection: 68315-1-Ig 1:1000) with HeLa cells lysate 1720 ug. This data was developed using the same antibody clone with 68315-1-PBS in a different storage buffer formulation.



Immunofluorescent analysis of (-20°C Ethanol) fixed HeLa cells using EXOSC10 antibody (68315-1-Ig, Clone: 1D6G9) at dilution of 1:1000 and CoraLite®488-Conjugated AffiniPure Goat Anti-Mouse IgG(H+L). This data was developed using the same antibody clone with 68315-1-PBS in a different storage buffer formulation.