

For Research Use Only

COL3A1 Monoclonal antibody

Catalog Number: 68320-1-Ig **3 Publications**



Basic Information

Catalog Number: 68320-1-Ig	GenBank Accession Number: BC028178	Purification Method: Protein G purification
Size: 150ul, Concentration: 1000 µg/ml by Nanodrop;	GeneID (NCBI): 1281	CloneNo.: 3B1F3
Source: Mouse	Full Name: collagen, type III, alpha 1	Recommended Dilutions: WB 1:5000-1:50000 IHC 1:1000-1:4000
Isotype: IgG1	Calculated MW: 1466 aa, 139 kDa	
Immunogen Catalog Number: AG4229	Observed MW: 130 kDa	

Applications

Tested Applications: IHC, WB, ELISA	Positive Controls:
Cited Applications: WB	WB: pig colon tissue, human placenta tissue, human rectum tissue, rabbit large intestine tissue, rat colon tissue
Species Specificity: Human, Rabbit, Pig, rat, mouse	IHC: human ovary tumor tissue, mouse skin tissue
Cited Species: human, rat, mouse	

Note-IHC: suggested antigen retrieval with TE buffer pH 9.0; (*) Alternatively, antigen retrieval may be performed with citrate buffer pH 6.0

Background Information

Type III collagen is a fibrillar-forming collagen comprising three $\alpha 1(\text{III})$ chains and is expressed in early embryos and throughout embryogenesis (PMID: 9050868). In the adult, type III collagen is a major component of the extracellular matrix in a variety of internal organs and skin. It occurs in most soft connective tissues along with type I collagen (PMID: 2445760). COL3A1 gene encodes type III procollagen. Mutations in this gene are associated with Ehlers-Danlos syndrome type IV, and with aortic and arterial aneurysms (PMID: 10706896; 2243125; 18389341).

Notable Publications

Author	Pubmed ID	Journal	Application
Yirong Wu	37580750	J Transl Med	WB
Zhi Jie Li	37391109	Int J Pharm	WB
Karolina Wojtowicz	37088000	Biochem Biophys Res Commun	WB

Storage

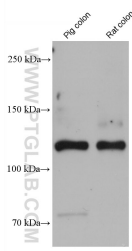
Storage:
Store at -20°C. Stable for one year after shipment.
Storage Buffer:
PBS with 0.02% sodium azide and 50% glycerol pH 7.3.
Aliquoting is unnecessary for -20°C storage

*** 20ul sizes contain 0.1% BSA

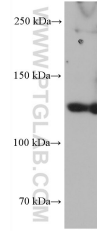
For technical support and original validation data for this product please contact:
T: 1 (888) 4PTGLAB (1-888-478-4522) (toll free in USA), or 1(312) 455-8498 (outside USA)
E: proteintech@ptglab.com
W: ptglab.com

This product is exclusively available under Proteintech Group brand and is not available to purchase from any other manufacturer.

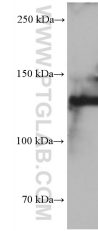
Selected Validation Data



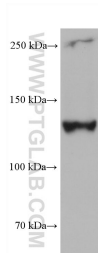
Various lysates were subjected to SDS PAGE followed by western blot with 68320-1-Ig (COL3A1 antibody) at dilution of 1:10000 incubated at room temperature for 1.5 hours.



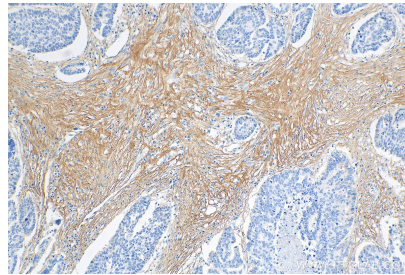
human placenta tissue were subjected to SDS PAGE followed by western blot with 68320-1-Ig (COL3A1 antibody) at dilution of 1:10000 incubated at room temperature for 1.5 hours.



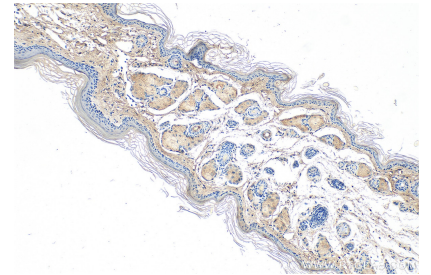
human rectum tissue were subjected to SDS PAGE followed by western blot with 68320-1-Ig (COL3A1 antibody) at dilution of 1:10000 incubated at room temperature for 1.5 hours.



rabbit large intestine tissue were subjected to SDS PAGE followed by western blot with 68320-1-Ig (COL3A1 antibody) at dilution of 1:10000 incubated at room temperature for 1.5 hours.



Immunohistochemical analysis of paraffin-embedded human ovary tumor tissue slide using 68320-1-Ig (COL3A1 antibody) at dilution of 1:2000 (under 10x lens). Heat mediated antigen retrieval with Tris-EDTA buffer (pH 9.0).



Immunohistochemical analysis of paraffin-embedded mouse skin tissue slide using 68320-1-Ig (COL3A1 antibody) at dilution of 1:1000 (under 10x lens). Heat mediated antigen retrieval with Tris-EDTA buffer (pH 9.0).