

For Research Use Only

Collagen Type III Monoclonal antibody, PBS Only

Catalog Number: 68320-1-PBS



Basic Information

Catalog Number: 68320-1-PBS	GenBank Accession Number: BC028178	Purification Method: Protein G purification
Size: 100ug, Concentration: 1mg/ml by Nanodrop;	GeneID (NCBI): 1281	CloneNo.: 3B1F3
Source: Mouse	UNIPROT ID: P02461	
Isotype: IgG1	Full Name: collagen, type III, alpha 1	
Immunogen Catalog Number: AG4229	Calculated MW: 1466 aa, 139 kDa	
	Observed MW: 130 kDa	

Applications

Tested Applications:
WB, IHC, Indirect ELISA

Species Specificity:
human, mouse, rat, pig, rabbit

Background Information

Type III collagen is a fibrillar-forming collagen comprising three $\alpha 1(\text{III})$ chains and is expressed in early embryos and throughout embryogenesis (PMID: 9050868). In the adult, type III collagen is a major component of the extracellular matrix in a variety of internal organs and skin. It occurs in most soft connective tissues along with type I collagen (PMID: 2445760). COL3A1 gene encodes type III procollagen. Mutations in this gene are associated with Ehlers-Danlos syndrome type IV, and with aortic and arterial aneurysms (PMID: 10706896; 2243125; 18389341).

Storage

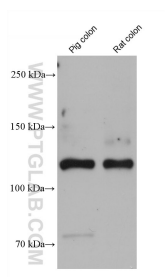
Storage:
Store at -80°C .

Storage Buffer:
PBS only

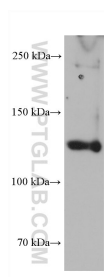
For technical support and original validation data for this product please contact:
T: 1 (888) 4PTGLAB (1-888-478-4522) (toll free in USA), or 1(312) 455-8498 (outside USA)
E: proteintech@ptglab.com
W: ptglab.com

This product is exclusively available under Proteintech Group brand and is not available to purchase from any other manufacturer.

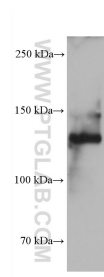
Selected Validation Data



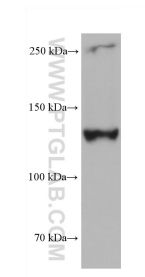
Various lysates were subjected to SDS PAGE followed by western blot with 68320-1-Ig (COL3A1 antibody) at dilution of 1:10000 incubated at room temperature for 1.5 hours. This data was developed using the same antibody clone with 68320-1-PBS in a different storage buffer formulation.



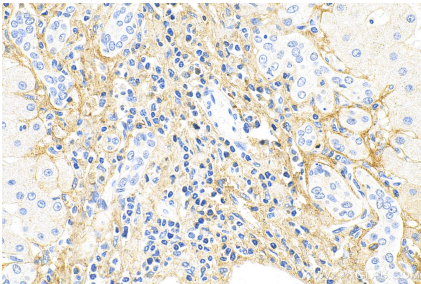
human placenta tissue were subjected to SDS PAGE followed by western blot with 68320-1-Ig (COL3A1 antibody) at dilution of 1:10000 incubated at room temperature for 1.5 hours. This data was developed using the same antibody clone with 68320-1-PBS in a different storage buffer formulation.



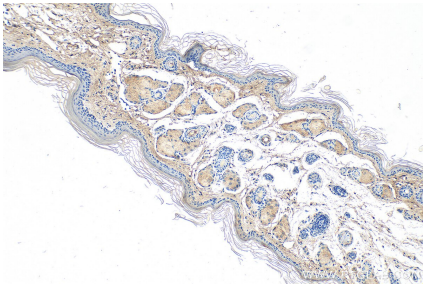
human rectum tissue were subjected to SDS PAGE followed by western blot with 68320-1-Ig (COL3A1 antibody) at dilution of 1:10000 incubated at room temperature for 1.5 hours. This data was developed using the same antibody clone with 68320-1-PBS in a different storage buffer formulation.



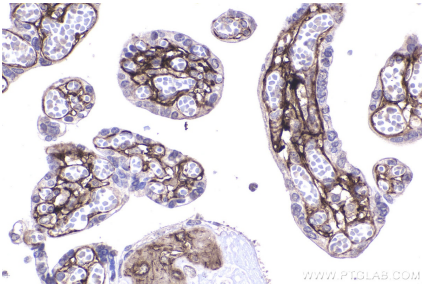
rabbit large intestine tissue were subjected to SDS PAGE followed by western blot with 68320-1-Ig (COL3A1 antibody) at dilution of 1:10000 incubated at room temperature for 1.5 hours. This data was developed using the same antibody clone with 68320-1-PBS in a different storage buffer formulation.



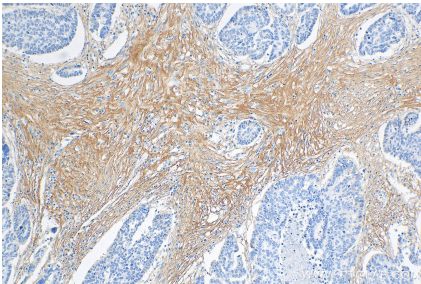
Immunohistochemical analysis of paraffin-embedded human hepatocirrhosis tissue slide using 68320-1-Ig (COL3A1 antibody) at dilution of 1:1000 (under 40x lens). Heat mediated antigen retrieval with Tris-EDTA buffer (pH 9.0). This data was developed using the same antibody clone with 68320-1-PBS in a different storage buffer formulation.



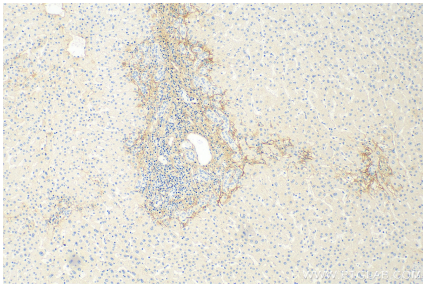
Immunohistochemical analysis of paraffin-embedded mouse skin tissue slide using 68320-1-Ig (COL3A1 antibody) at dilution of 1:1000 (under 10x lens). Heat mediated antigen retrieval with Tris-EDTA buffer (pH 9.0). This data was developed using the same antibody clone with 68320-1-PBS in a different storage buffer formulation.



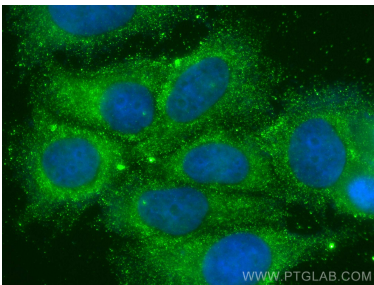
Immunohistochemical analysis of paraffin-embedded human placenta tissue slide using 68320-1-Ig (COL3A1 antibody) at dilution of 1:2000 (under 40x lens). Heat mediated antigen retrieval with Tris-EDTA buffer (pH 9.0). This data was developed using the same antibody clone with 68320-1-PBS in a different storage buffer formulation.



Immunohistochemical analysis of paraffin-embedded human ovary tumor tissue slide using 68320-1-Ig (COL3A1 antibody) at dilution of 1:2000 (under 10x lens). Heat mediated antigen retrieval with Tris-EDTA buffer (pH 9.0). This data was developed using the same antibody clone with 68320-1-PBS in a different storage buffer formulation.



Immunohistochemical analysis of paraffin-embedded human hepatocirrhosis tissue slide using 68320-1-Ig (COL3A1 antibody) at dilution of 1:1000 (under 10x lens). Heat mediated antigen retrieval with Tris-EDTA buffer (pH 9.0). This data was developed using the same antibody clone with 68320-1-PBS in a different storage buffer formulation.



Immunofluorescent analysis of (-20°C Methanol) fixed MCF-7 cells using COL3A1 antibody (68320-1-Ig, Clone: 3B1F3) at dilution of 1:400 and CoraLite®488-Conjugated AffiniPure Goat Anti-Mouse IgG(H+L) (SA00013-1). This data was developed using the same antibody clone with 68320-1-PBS in a different storage buffer formulation.