

For Research Use Only

NAB2 Monoclonal antibody

Catalog Number: 68322-1-Ig



Basic Information

Catalog Number: 68322-1-Ig	GenBank Accession Number: BC065931	Purification Method: Protein A purification
Size: 150ul , Concentration: 1000 µg/ml by Nanodrop;	GeneID (NCBI): 4665	CloneNo.: 1F1E2
Source: Mouse	Full Name: NGFI-A binding protein 2 (EGR1 binding protein 2)	Recommended Dilutions: WB 1:5000-1:50000
Isotype: IgG2b	Calculated MW: 57 kDa	
Immunogen Catalog Number: AG6346	Observed MW: 57 kDa	

Applications

Tested Applications: WB, ELISA	Positive Controls: WB : HEK-293 cells, U2OS cells, HSC-T6 cells, NIH/3T3 cells, HeLa cells, A2780 cells, A375 cells, MCF-7 cells
Species Specificity: Human, Mouse, Rat	

Background Information

NGFI-A-Binding protein 2 (NAB2) is a member of the poly(A)-binding protein (PABP) family in *S. cerevisiae* and emerged as a key component in the tightly intertwined system of poly(A) tail length control, mRNP formation, and export of mature mRNPs.

Storage

Storage:
Store at -20°C. Stable for one year after shipment.
Storage Buffer:
PBS with 0.02% sodium azide and 50% glycerol pH 7.3.
Aliquoting is unnecessary for -20°C storage

*** 20ul sizes contain 0.1% BSA

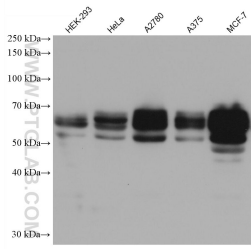
For technical support and original validation data for this product please contact:

T: 1 (888) 4PTGLAB (1-888-478-4522) (toll free
in USA), or 1(312) 455-8498 (outside USA)

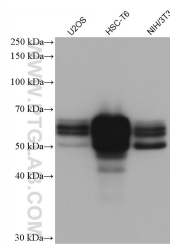
E: proteintech@ptglab.com
W: ptglab.com

This product is exclusively available under Proteintech Group brand and is not available to purchase from any other manufacturer.

Selected Validation Data



Various lysates were subjected to SDS PAGE followed by western blot with 68322-1-Ig (NAB2 antibody) at dilution of 1:20000 incubated at room temperature for 1.5 hours.



Various lysates were subjected to SDS PAGE followed by western blot with 68322-1-Ig (NAB2 antibody) at dilution of 1:20000 incubated at room temperature for 1.5 hours.