

For Research Use Only

NAB2 Monoclonal antibody, PBS Only



Catalog Number: 68322-1-PBS

Basic Information

Catalog Number: 68322-1-PBS	GenBank Accession Number: BC065931	Purification Method: Protein A purification
Size: 100ug , Concentration: 1 mg/ml by Nanodrop;	GeneID (NCBI): 4665	CloneNo.: 1F1E2
Source: Mouse	UNIPROT ID: Q15742	
Isotype: IgG2b	Full Name: NGFI-A binding protein 2 (EGR1 binding protein 2)	
Immunogen Catalog Number: AG6346	Calculated MW: 57 kDa	
	Observed MW: 57 kDa	

Applications

Tested Applications:
WB, Indirect ELISA

Species Specificity:
Human, Mouse, Rat

Background Information

NGFI-A-Binding protein 2 (NAB2) is a member of the poly(A)-binding protein (PABP) family in *S. cerevisiae* and emerged as a key component in the tightly intertwined system of poly(A) tail length control, mRNP formation, and export of mature mRNPs.

Storage

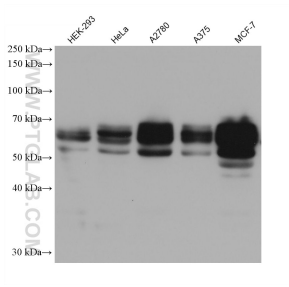
Storage:
Store at -80°C.

Storage Buffer:
PBS Only

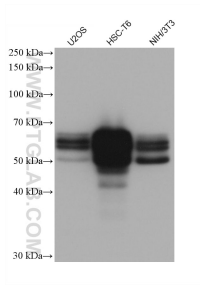
For technical support and original validation data for this product please contact:
T: 1 (888) 4PTGLAB (1-888-478-4522) (toll free in USA), or 1(312) 455-8498 (outside USA)
E: proteintech@ptglab.com
W: ptglab.com

This product is exclusively available under Proteintech Group brand and is not available to purchase from any other manufacturer.

Selected Validation Data



Various lysates were subjected to SDS PAGE followed by western blot with 68322-1-Ig (NAB2 antibody) at dilution of 1:20000 incubated at room temperature for 1.5 hours. This data was developed using the same antibody clone with 68322-1-PBS in a different storage buffer formulation.



Various lysates were subjected to SDS PAGE followed by western blot with 68322-1-Ig (NAB2 antibody) at dilution of 1:20000 incubated at room temperature for 1.5 hours. This data was developed using the same antibody clone with 68322-1-PBS in a different storage buffer formulation.