

For Research Use Only

LRRC8C Monoclonal antibody

Catalog Number: 68323-1-Ig



Basic Information

Catalog Number: 68323-1-Ig	GenBank Accession Number: BC113973	Purification Method: Protein A purification
Size: 150ul , Concentration: 1000 µg/ml by Nanodrop;	GeneID (NCBI): 84230	CloneNo.: 4A6A4
Source: Mouse	Full Name: leucine rich repeat containing 8 family, member C	Recommended Dilutions: WB 1:2000-1:10000
Isotype: IgG2b	Calculated MW: 803 aa, 92 kDa	
Immunogen Catalog Number: AG17001	Observed MW: 105 kDa	

Applications

Tested Applications: WB, ELISA	Positive Controls: WB : HeLa cells, U2OS cells, HEK-239 cells
Species Specificity: Human	

Background Information

LRRC8C (Leucine-rich repeat-containing protein 8C), also known as AD158, is a non-essential component of the volume-regulated anion channel (VRAC, also known as VSOAC channel), which is required to maintain a constant cell volume in response to extracellular or intracellular permeability changes. The VRAC channel conducts iodide better than chloride and can also conduct organic osmolytes like taurine. The VRAC channel also mediates transport of immunoreactive cyclic dinucleotide GMP-AMP (2'-3'-cGAMP), an immune messenger produced in response to DNA virus in the cytosol (PMID:24790029; 26824658; 28193731).

Storage

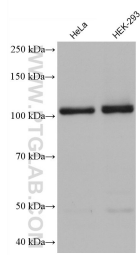
Storage:
Store at -20°C. Stable for one year after shipment.
Storage Buffer:
PBS with 0.02% sodium azide and 50% glycerol pH 7.3.
Aliquoting is unnecessary for -20°C storage

*** 20ul sizes contain 0.1% BSA

For technical support and original validation data for this product please contact:
T: 1 (888) 4PTGLAB (1-888-478-4522) (toll free in USA), or 1(312) 455-8498 (outside USA)
E: proteintech@ptglab.com
W: ptglab.com

This product is exclusively available under Proteintech Group brand and is not available to purchase from any other manufacturer.

Selected Validation Data



Various lysates were subjected to SDS PAGE followed by western blot with 68323-1-Ig (LRRC8C antibody) at dilution of 1:5000 incubated at room temperature for 1.5 hours.