

For Research Use Only

SH3GLB2 Monoclonal antibody

Catalog Number: 68325-1-Ig



Basic Information

Catalog Number: 68325-1-Ig	GenBank Accession Number: BC014635	Purification Method: Protein G purification
Size: 150ul, Concentration: 1000 µg/ml by Nanodrop;	GeneID (NCBI): 56904	CloneNo.: 4B1A10
Source: Mouse	Full Name: SH3-domain GRB2-like endophilin B2	Recommended Dilutions: WB 1:5000-1:50000 IP 0.5-4.0 ug for IP and 1:500-1:1000 for WB
Isotype: IgG1	Calculated MW: 395 aa, 44 kDa	IHC 1:500-1:2000
Immunogen Catalog Number: AG8932	Observed MW: 47-50 kDa	IF 1:500-1:2000

Applications

Tested Applications:

IF, IHC, IP, WB, ELISA

Species Specificity:

Human, mouse, rat, pig, rabbit

Note-IHC: suggested antigen retrieval with TE buffer pH 9.0; (*) Alternatively, antigen retrieval may be performed with citrate buffer pH 6.0

Positive Controls:

WB: LNCaP cells, rat brain tissue, HeLa cells, HEK-293 cells, Jurkat cells, K-562 cells, pig brain tissue, rabbit brain tissue, mouse brain tissue

IP: HeLa cells,

IHC: mouse testis tissue,

IF: HeLa cells,

Background Information

SH3GLB2 is an endophilin-related protein family with 395-amino acid protein and contains an N-terminal domain, a central coiled-coil region, and a C-terminal SH3 domain. SH3GLB2 is expressed in many tissues, including skeletal muscle, adipocytes, brain, lung, colon, and mammary gland. SH3GLB2 was expressed in the cytoplasm of transfected HeLa cells and was excluded from nuclei (PMID: 11161816).

Storage

Storage:

Store at -20°C. Stable for one year after shipment.

Storage Buffer:

PBS with 0.02% sodium azide and 50% glycerol pH 7.3.

Aliquoting is unnecessary for -20°C storage

*** 20ul sizes contain 0.1% BSA

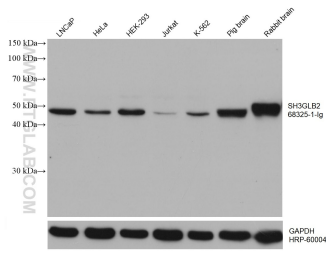
For technical support and original validation data for this product please contact:

T: 1 (888) 4PTGLAB (1-888-478-4522) (toll free in USA), or 1(312) 455-8498 (outside USA)

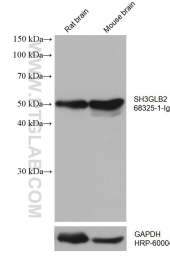
E: proteintech@ptglab.com
W: ptglab.com

This product is exclusively available under Proteintech Group brand and is not available to purchase from any other manufacturer.

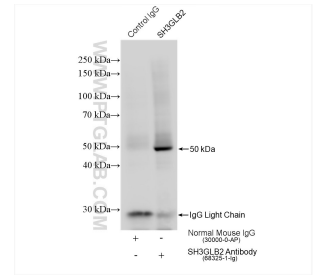
Selected Validation Data



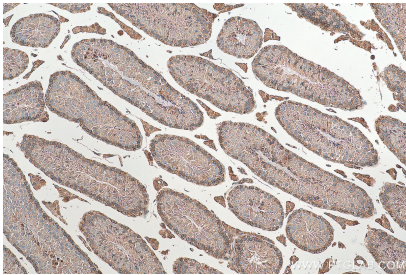
Various lysates were subjected to SDS PAGE followed by western blot with 68325-1-Ig (SH3GLB2 antibody) at dilution of 1:10000 incubated at room temperature for 1.5 hours. The membrane was stripped and reblotted with HRP-conjugated GAPDH Monoclonal antibody (HRP-60004) as loading control.



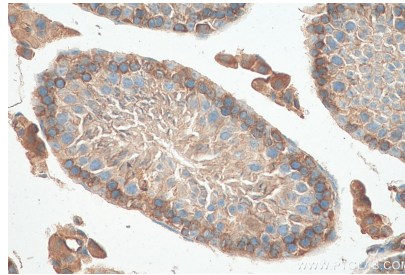
Various lysates were subjected to SDS PAGE followed by western blot with 68325-1-Ig (SH3GLB2 antibody) at dilution of 1:10000 incubated at room temperature for 1.5 hours. The membrane was stripped and reblotted with HRP-conjugated GAPDH Monoclonal antibody (HRP-60004) as loading control.



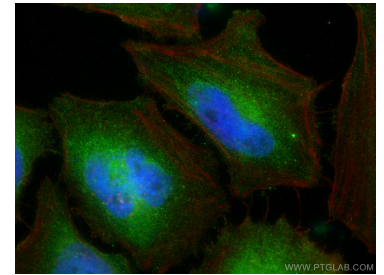
IP result of anti-SH3GLB2 (IP:68325-1-Ig, 4ug; Detection:68325-1-Ig 1:800) with HeLa cells lysate 1080 ug.



Immunohistochemical analysis of paraffin-embedded mouse testis tissue slide using 68325-1-Ig (SH3GLB2 antibody) at dilution of 1:1000 (under 10x lens). Heat mediated antigen retrieval with Tris-EDTA buffer (pH 9.0).



Immunohistochemical analysis of paraffin-embedded mouse testis tissue slide using 68325-1-Ig (SH3GLB2 antibody) at dilution of 1:1000 (under 40x lens). Heat mediated antigen retrieval with Tris-EDTA buffer (pH 9.0).



Immunofluorescent analysis of (4% PFA) fixed HeLa cells using SH3GLB2 antibody (68325-1-Ig, Clone: 4B1A10) at dilution of 1:1000 and CoraLite@488-Conjugated AffiniPure Goat Anti-Mouse IgG(H+L), CL594-Phalloidin (red).