

For Research Use Only

# SH3GLB2 Monoclonal antibody, PBS Only



Catalog Number: 68325-1-PBS

## Basic Information

<b>Catalog Number:</b> 68325-1-PBS	<b>GenBank Accession Number:</b> BC014635	<b>Purification Method:</b> Protein G purification
<b>Size:</b> 100ug , Concentration: 1 mg/ml by Nanodrop;	<b>GeneID (NCBI):</b> 56904	<b>CloneNo.:</b> 4B1A10
<b>Source:</b> Mouse	<b>UNIPROT ID:</b> Q9NR46	
<b>Isotype:</b> IgG1	<b>Full Name:</b> SH3-domain GRB2-like endophilin B2	
<b>Immunogen Catalog Number:</b> AG8932	<b>Calculated MW:</b> 395 aa, 44 kDa	
	<b>Observed MW:</b> 47-50 kDa	

## Applications

**Tested Applications:**  
WB, IP, IF, IHC, Indirect ELISA

**Species Specificity:**  
Human, mouse, rat, pig, rabbit

## Background Information

SH3GLB2 is an endophilin-related protein family with 395-amino acid protein and contains an N-terminal domain, a central coiled-coil region, and a C-terminal SH3 domain. SH3GLB2 is expressed in many tissues, including skeletal muscle, adipocytes, brain, lung, colon, and mammary gland. SH3GLB2 was expressed in the cytoplasm of transfected HeLa cells and was excluded from nuclei(PMID: 11161816).

## Storage

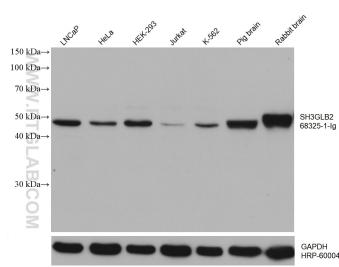
**Storage:**  
Store at -80°C.

**Storage Buffer:**  
PBS Only

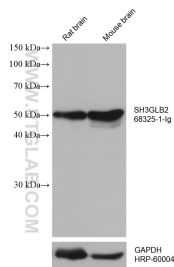
For technical support and original validation data for this product please contact:  
T: 1 (888) 4PTGLAB (1-888-478-4522) (toll free in USA), or 1(312) 455-8498 (outside USA)  
E: [proteintech@ptglab.com](mailto:proteintech@ptglab.com)  
W: [ptglab.com](http://ptglab.com)

This product is exclusively available under Proteintech Group brand and is not available to purchase from any other manufacturer.

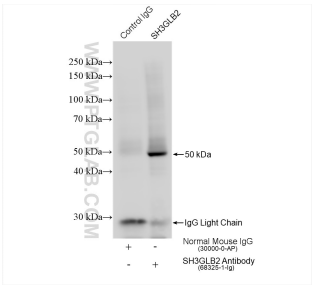
Selected Validation Data



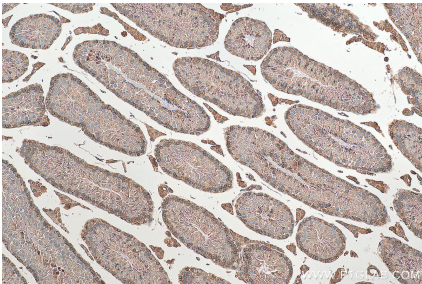
Various lysates were subjected to SDS PAGE followed by western blot with 68325-1-Ig (SH3GLB2 antibody) at dilution of 1:10000 incubated at room temperature for 1.5 hours. The membrane was stripped and reblotted with HRP-conjugated GAPDH Monoclonal antibody (HRP-60004) as loading control. This data was developed using the same antibody clone with 68325-1-PBS in a different storage buffer formulation.



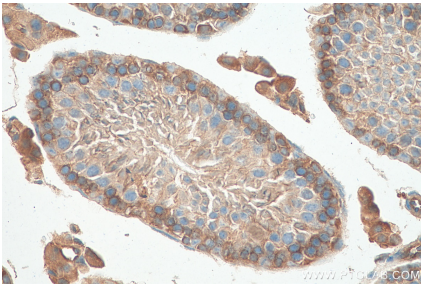
Various lysates were subjected to SDS PAGE followed by western blot with 68325-1-Ig (SH3GLB2 antibody) at dilution of 1:10000 incubated at room temperature for 1.5 hours. The membrane was stripped and reblotted with HRP-conjugated GAPDH Monoclonal antibody (HRP-60004) as loading control. This data was developed using the same antibody clone with 68325-1-PBS in a different storage buffer formulation.



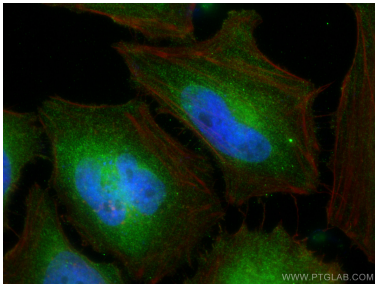
IP result of anti-SH3GLB2 (IP:68325-1-Ig, 4ug; Detection:68325-1-Ig 1:800) with HeLa cells lysate 1080 ug. This data was developed using the same antibody clone with 68325-1-PBS in a different storage buffer formulation.



Immunohistochemical analysis of paraffin-embedded mouse testis tissue slide using 68325-1-Ig (SH3GLB2 antibody) at dilution of 1:1000 (under 10x lens). Heat mediated antigen retrieval with Tris-EDTA buffer (pH 9.0). This data was developed using the same antibody clone with 68325-1-PBS in a different storage buffer formulation.



Immunohistochemical analysis of paraffin-embedded mouse testis tissue slide using 68325-1-Ig (SH3GLB2 antibody) at dilution of 1:1000 (under 40x lens). Heat mediated antigen retrieval with Tris-EDTA buffer (pH 9.0). This data was developed using the same antibody clone with 68325-1-PBS in a different storage buffer formulation.



Immunofluorescent analysis of (4% PFA) fixed HeLa cells using SH3GLB2 antibody (68325-1-Ig, Clone: 4B1A10) at dilution of 1:1000 and CoraLite@488-Conjugated AffiniPure Goat Anti-Mouse IgG(H+L), CL594-Phalloidin (red). This data was developed using the same antibody clone with 68325-1-PBS in a different storage buffer formulation.