

For Research Use Only

AZI2 Monoclonal antibody

Catalog Number: 68326-1-Ig



Basic Information

Catalog Number: 68326-1-Ig	GenBank Accession Number: BC001139	Purification Method: Protein G purification
Size: 150ul , Concentration: 1000 µg/ml by Nanodrop;	GeneID (NCBI): 64343	CloneNo.: 2F1G5
Source: Mouse	Full Name: 5-azacytidine induced 2	Recommended Dilutions: WB 1:5000-1:50000 IF 1:500-1:2000
Isotype: IgG1	Calculated MW: 45 kDa	
Immunogen Catalog Number: AG6755	Observed MW: 45 kDa	

Applications

Tested Applications: IF, WB, ELISA	Positive Controls:
Species Specificity: Human, mouse, rat	WB : U2OS cells, MDA-MB-231 cells, SK-BR-3 cells, LNCaP cells, HeLa cells, HEK-293 cells, K-562 cells, HSC-T6 cells, 4T1 cells
	IF : HeLa cells,

Background Information

AZI2, also known as NAP1, is a TNF receptor (TNFR)-associated factor family member-associated NF-κB activator-binding kinase 1-binding protein that regulates the production of IFNs. It is an adapter protein which binds TBK1 and IKKε playing a role in antiviral innate immunity. NAP1 is a kind of adapter protein which binds TBK1 and IKKε playing a role in antiviral innate immunity. (PMID: 21931631)

Storage

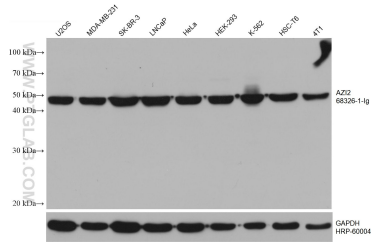
Storage:
Store at -20°C. Stable for one year after shipment.
Storage Buffer:
PBS with 0.02% sodium azide and 50% glycerol pH 7.3.
Aliquoting is unnecessary for -20°C storage

*** 20ul sizes contain 0.1% BSA

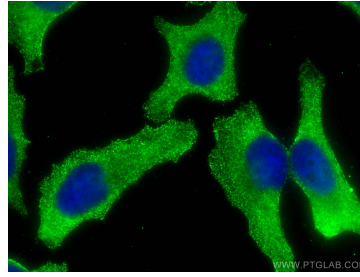
For technical support and original validation data for this product please contact:
T: 1 (888) 4PTGLAB (1-888-478-4522) (toll free in USA), or 1(312) 455-8498 (outside USA) E: proteintech@ptglab.com W: ptglab.com

This product is exclusively available under Proteintech Group brand and is not available to purchase from any other manufacturer.

Selected Validation Data



Various lysates were subjected to SDS PAGE followed by western blot with 68326-1-Ig (AZI2 antibody) at dilution of 1:10000 incubated at room temperature for 1.5 hours. The membrane was stripped and reblotted with HRP-conjugated GAPDH Monoclonal antibody (HRP-60004) as loading control.



Immunofluorescent analysis of (-20°C Methanol) fixed HeLa cells using AZI2 antibody (68326-1-Ig, Clone: 2F1G5) at dilution of 1:1000 and CoraLite® 488-Conjugated AffiniPure Goat Anti-Mouse IgG(H+L).