

For Research Use Only

# NDUFS6 Monoclonal antibody, PBS Only



Catalog Number: 68329-1-PBS

## Basic Information

<b>Catalog Number:</b> 68329-1-PBS	<b>GenBank Accession Number:</b> BC046155	<b>Purification Method:</b> Protein G purification
<b>Size:</b> 100ug , Concentration: 1 mg/ml by Nanodrop;	<b>GeneID (NCBI):</b> 4726	<b>CloneNo.:</b> 2F4H3
<b>Source:</b> Mouse	<b>UNIPROT ID:</b> O75380	
<b>Isotype:</b> IgG1	<b>Full Name:</b> NADH dehydrogenase (ubiquinone) Fe-S protein 6, 13kDa (NADH-coenzyme Q reductase)	
<b>Immunogen Catalog Number:</b> AG6286	<b>Calculated MW:</b> 14 kDa	
	<b>Observed MW:</b> 13-15 kDa	

## Applications

**Tested Applications:**  
WB, IF, IHC, Indirect ELISA

**Species Specificity:**  
Human, Mouse, Rat, Rabbit, Chicken

## Background Information

NDUFS6(NADH dehydrogenase [ubiquinone] iron-sulfur protein 6, mitochondrial) is also named as CI-13kD-A, NADH-ubiquinone oxidoreductase 13 kDa-A subunit and belongs to the complex I NDUFS6 subunit family. It is an accessory subunit of the mitochondrial membrane respiratory chain NADH dehydrogenase (Complex I), that is believed not to be involved in catalysis.

## Storage

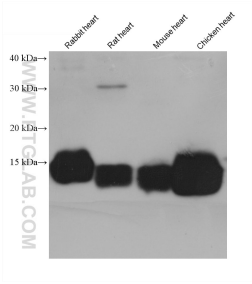
**Storage:**  
Store at -80°C.

**Storage Buffer:**  
PBS Only

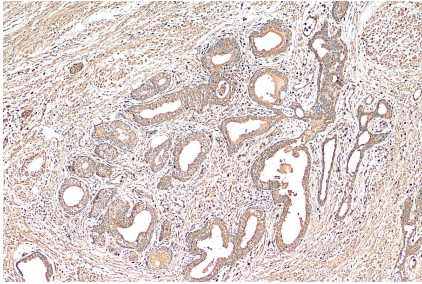
For technical support and original validation data for this product please contact:  
T: 1 (888) 4PTGLAB (1-888-478-4522) (toll free in USA), or 1(312) 455-8498 (outside USA)  
E: [proteintech@ptglab.com](mailto:proteintech@ptglab.com)  
W: [ptglab.com](http://ptglab.com)

This product is exclusively available under Proteintech Group brand and is not available to purchase from any other manufacturer.

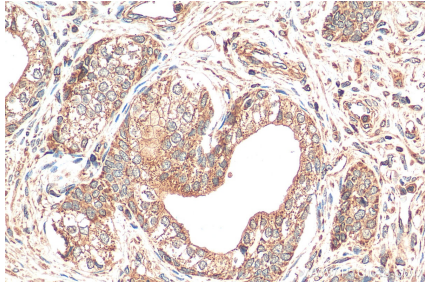
Selected Validation Data



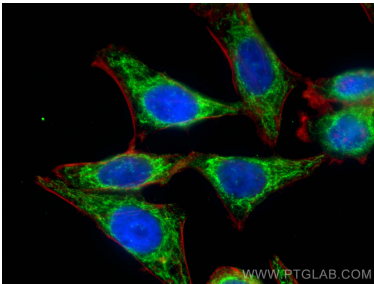
rabbit heart tissue were subjected to SDS PAGE followed by western blot with 68329-1-Ig (NDUFS6 antibody) at dilution of 1:20000 incubated at room temperature for 1.5 hours. This data was developed using the same antibody clone with 68329-1-PBS in a different storage buffer formulation.



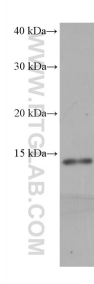
Immunohistochemical analysis of paraffin-embedded human prostate cancer tissue slide using 68329-1-Ig (NDUFS6 antibody) at dilution of 1:1000 (under 10x lens). Heat mediated antigen retrieval with Tris-EDTA buffer (pH 9.0). This data was developed using the same antibody clone with 68329-1-PBS in a different storage buffer formulation.



Immunohistochemical analysis of paraffin-embedded human prostate cancer tissue slide using 68329-1-Ig (NDUFS6 antibody) at dilution of 1:1000 (under 40x lens). Heat mediated antigen retrieval with Tris-EDTA buffer (pH 9.0). This data was developed using the same antibody clone with 68329-1-PBS in a different storage buffer formulation.



Immunofluorescent analysis of (4% PFA) fixed HepG2 cells using NDUFS6 antibody (68329-1-Ig, Clone: 2F4H3 ) at dilution of 1:800 and CoraLite®488-Conjugated AffiniPure Goat Anti-Mouse IgG(H+L), CL594-phalloidin (red). This data was developed using the same antibody clone with 68329-1-PBS in a different storage buffer formulation.



HepG2 cells were subjected to SDS PAGE followed by western blot with 68329-1-Ig (NDUFS6 antibody) at dilution of 1:20000 incubated at room temperature for 1.5 hours. This data was developed using the same antibody clone with 68329-1-PBS in a different storage buffer formulation.