

For Research Use Only

EPS8L2 Monoclonal antibody, PBS Only



Catalog Number: 68330-1-PBS

Featured Product

Basic Information

Catalog Number:

68330-1-PBS

Size:

100ug, Concentration: 1 mg/ml by Nanodrop;

Source:

Mouse

Isotype:

IgG1

Immunogen Catalog Number:

AG16808

GenBank Accession Number:

BC002474

GeneID (NCBI):

64787

UNIPROT ID:

Q9H6S3

Full Name:

EPS8-like 2

Calculated MW:

715 aa, 81 kDa

Observed MW:

81-85 kDa

Purification Method:

Protein A purification

CloneNo.:

2E3B1

Applications

Tested Applications:

WB, IF, Indirect ELISA

Species Specificity:

Human, Mouse, Rat

Background Information

EPS8L2 (epidermal growth factor receptor pathway substrate 8 L2), a member of the Eps8-like protein family, is a newly identified hair bundle protein that is localized at the tips of stereocilia of both cochlear and vestibular hair cells.

Storage

Storage:

Store at -80°C.

Storage Buffer:

PBS Only

For technical support and original validation data for this product please contact:

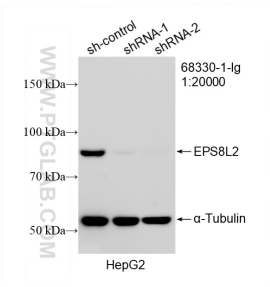
T: 1 (888) 4PTGLAB (1-888-478-4522) (toll free in USA), or 1(312) 455-8498 (outside USA)

E: proteintech@ptglab.com

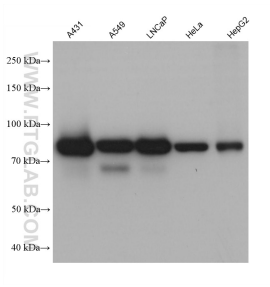
W: ptglab.com

This product is exclusively available under Proteintech Group brand and is not available to purchase from any other manufacturer.

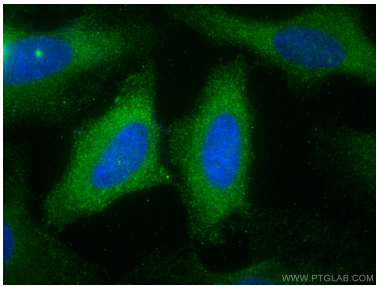
Selected Validation Data



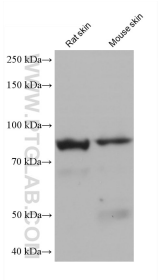
WB result of EPS8L2 antibody (68330-1-Ig; 1:20000; incubated at room temperature for 1.5 hours) with sh-Control and sh-EPS8L2 transfected HepG2 cells. This data was developed using the same antibody clone with 68330-1-PBS in a different storage buffer formulation.



A431 cells were subjected to SDS PAGE followed by western blot with 68330-1-Ig (EPS8L2 antibody) at dilution of 1:10000 incubated at room temperature for 1.5 hours. This data was developed using the same antibody clone with 68330-1-PBS in a different storage buffer formulation.



Immunofluorescent analysis of (-20°C Methanol) fixed HeLa cells using EPS8L2 antibody (68330-1-Ig, Clone: 2E3B1) at dilution of 1:500 and CoraLite®488-Conjugated AffiniPure Goat Anti-Mouse IgG(H+L). This data was developed using the same antibody clone with 68330-1-PBS in a different storage buffer formulation.



rat skin tissue were subjected to SDS PAGE followed by western blot with 68330-1-Ig (EPS8L2 antibody) at dilution of 1:10000 incubated at room temperature for 1.5 hours. This data was developed using the same antibody clone with 68330-1-PBS in a different storage buffer formulation.