

For Research Use Only

# ALAS2 Monoclonal antibody, PBS Only (Capture)

Catalog Number: 68332-1-PBS



## Basic Information

|  |  |   |
|--|--|---|
| <b>Catalog Number:</b><br>68332-1-PBS                      | <b>GenBank Accession Number:</b><br>BC030230             | <b>Purification Method:</b><br>Protein G purification |
| <b>Size:</b><br>100ug , Concentration: 1mg/ml by Nanodrop; | <b>GeneID (NCBI):</b><br>212                             | <b>CloneNo.:</b><br>2C1H1                             |
| <b>Source:</b><br>Mouse                                    | <b>UNIPROT ID:</b><br>P22557                             |   |
| <b>Isotype:</b><br>IgG1                                    | <b>Full Name:</b><br>aminolevulinate, delta-, synthase 2 |   |
| <b>Immunogen Catalog Number:</b><br>AG13524                | <b>Calculated MW:</b><br>587 aa, 65 kDa                  |   |
|  | <b>Observed MW:</b><br>60-65 kDa                         |   |

## Applications

**Tested Applications:**  
WB, Cytometric bead array, Indirect ELISA

**Species Specificity:**  
human

## Product Information

68332-1-PBS targets ALAS2 as part of a matched antibody pair:

MP50624-1: 68332-1-PBS capture and 68332-2-PBS detection (validated in Cytometric bead array)

MP50624-2: 68332-1-PBS capture and 68332-3-PBS detection (validated in Cytometric bead array)

Unconjugated mouse monoclonal antibody pair in PBS only (BSA and azide free) storage buffer at a concentration of 1 mg/mL, ready for conjugation.

This conjugation ready format makes antibodies ideal for use in many applications including: ELISAs, multiplex assays requiring matched pairs, mass cytometry, and multiplex imaging applications. Antibody use should be optimized by the end user for each application and assay.

## Background Information

The heme biosynthetic pathway begins from delta aminolevulinic acid synthase (ALAS) catalyzing the condensation of glycine and succinyl-CoA to delta aminolevulinic acid (ALA) in the mitochondria. ALAS is coded by two genes: ALAS1 and ALAS2. ALAS1 is ubiquitously expressed in all cells, and the negative feedback is regulated by the heme pool; however, ALAS2 is specifically expressed only in erythroid cells.

## Storage

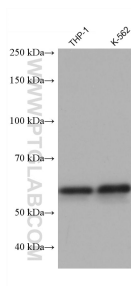
**Storage:**  
Store at -80°C.

**Storage Buffer:**  
PBS Only

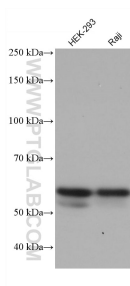
For technical support and original validation data for this product please contact:  
T: 1 (888) 4PTGLAB (1-888-478-4522) (toll free in USA), or 1(312) 455-8498 (outside USA)  
E: [proteintech@ptglab.com](mailto:proteintech@ptglab.com)  
W: [ptglab.com](http://ptglab.com)

This product is exclusively available under Proteintech Group brand and is not available to purchase from any other manufacturer.

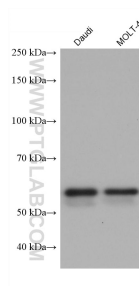
Selected Validation Data



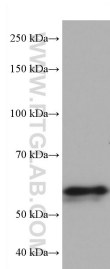
Various lysates were subjected to SDS PAGE followed by western blot with 68332-1-Ig (ALAS2 antibody) at dilution of 1:10000 incubated at room temperature for 1.5 hours. This data was developed using the same antibody clone with 68332-1-PBS in a different storage buffer formulation.



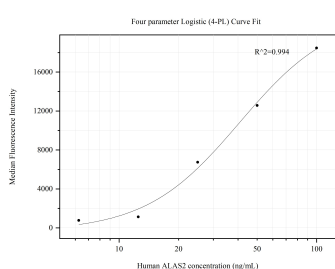
Various lysates were subjected to SDS PAGE followed by western blot with 68332-1-Ig (ALAS2 antibody) at dilution of 1:10000 incubated at room temperature for 1.5 hours. This data was developed using the same antibody clone with 68332-1-PBS in a different storage buffer formulation.



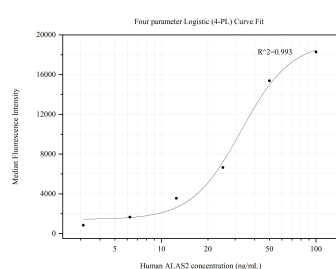
Various lysates were subjected to SDS PAGE followed by western blot with 68332-1-Ig (ALAS2 antibody) at dilution of 1:10000 incubated at room temperature for 1.5 hours. This data was developed using the same antibody clone with 68332-1-PBS in a different storage buffer formulation.



NK-92 cells were subjected to SDS PAGE followed by western blot with 68332-1-Ig (ALAS2 antibody) at dilution of 1:10000 incubated at room temperature for 1.5 hours. This data was developed using the same antibody clone with 68332-1-PBS in a different storage buffer formulation.



Cytometric bead array standard curve of MP50624-1, ALAS2 Monoclonal Matched Antibody Pair, PBS Only. Capture antibody: 68332-1-PBS. Detection antibody: 68332-2-PBS. Standard:Ag13524. Range: 6.25-100 ng/mL.



Cytometric bead array standard curve of MP50624-2, ALAS2 Monoclonal Matched Antibody Pair, PBS Only. Capture antibody: 68332-1-PBS. Detection antibody: 68332-3-PBS. Standard:Ag13524. Range: 3.125-100 ng/mL.