

For Research Use Only

ALAS2 Monoclonal antibody, PBS Only (Capture/Detector)

Catalog Number: 68332-2-PBS



Basic Information

Catalog Number: 68332-2-PBS	GenBank Accession Number: BC030230	Purification Method: Protein G purification
Size: 100ug , Concentration: 1 mg/ml by Nanodrop;	GeneID (NCBI): 212	CloneNo.: 2B3C12
Source: Mouse	UNIPROT ID: P22557	
Isotype: IgG1	Full Name: aminolevulinate, delta-, synthase 2	
Immunogen Catalog Number: AG13524	Calculated MW: 587 aa, 65 kDa	

Applications

Tested Applications:
Cytometric bead array, Indirect ELISA

Species Specificity:
human

Product Information

68332-2-PBS targets ALAS2 as part of a matched antibody pair.

MP50624-1: 68332-1-PBS capture and 68332-2-PBS detection (validated in Cytometric bead array)

MP50624-3: 68332-2-PBS capture and 68332-3-PBS detection (validated in Cytometric bead array)

Unconjugated mouse monoclonal antibody pair in PBS only (BSA and azide free) storage buffer at a concentration of 1 mg/mL, ready for conjugation.

This conjugation ready format makes antibodies ideal for use in many applications including: ELISAs, multiplex assays requiring matched pairs, mass cytometry, and multiplex imaging applications. Antibody use should be optimized by the end user for each application and assay.

Storage

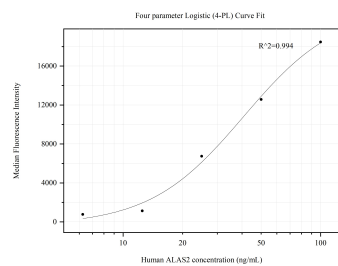
Storage:
Store at -80°C.

Storage Buffer:
PBS Only

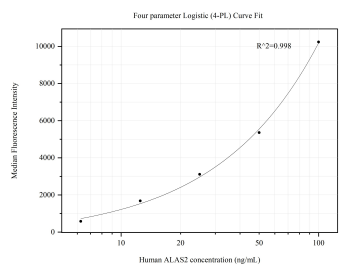
For technical support and original validation data for this product please contact:
T: 1 (888) 4PTGLAB (1-888-478-4522) (toll free in USA), or 1(312) 455-8498 (outside USA)
E: proteintech@ptglab.com
W: ptglab.com

This product is exclusively available under Proteintech Group brand and is not available to purchase from any other manufacturer.

Selected Validation Data



Cytometric bead array standard curve of MP50624-1, ALAS2 Monoclonal Matched Antibody Pair, PBS Only. Capture antibody: 68332-1-PBS. Detection antibody: 68332-2-PBS. Standard:Ag13524. Range: 6.25-100 ng/mL



Cytometric bead array standard curve of MP50624-3, ALAS2 Monoclonal Matched Antibody Pair, PBS Only. Capture antibody: 68332-2-PBS. Detection antibody: 68332-3-PBS. Standard:Ag13524. Range: 6.25-100 ng/mL