

For Research Use Only

ALAS2 Monoclonal antibody, PBS Only (Detector)

Catalog Number: 68332-5-PBS



Basic Information

| | | |
|---|--|--|
| Catalog Number: 68332-5-PBS | GenBank Accession Number: BC030230 | Purification Method: Protein G Magarose purification |
| Size: 100ug , Concentration: 1 mg/ml by Nanodrop; | GeneID (NCBI): 212 | CloneNo.: 1E5E11 |
| Source: Mouse | UNIPROT ID: P22557 | |
| Isotype: IgG1 | Full Name: aminolevulinate, delta-, synthase 2 | |
| Immunogen Catalog Number: AG13524 | Calculated MW: 587 aa, 65 kDa | |

Applications

Tested Applications:
Cytometric bead array, Indirect ELISA

Species Specificity:
human

Product Information

68332-5-PBS targets ALAS2 as part of a matched antibody pair.

MP50624-4: 68332-4-PBS capture and 68332-5-PBS detection (validated in Cytometric bead array)

Unconjugated mouse monoclonal antibody pair in PBS only (BSA and azide free) storage buffer at a concentration of 1 mg/mL, ready for conjugation.

This conjugation ready format makes antibodies ideal for use in many applications including: ELISAs, multiplex assays requiring matched pairs, mass cytometry, and multiplex imaging applications. Antibody use should be optimized by the end user for each application and assay.

Storage

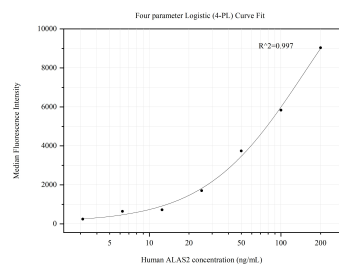
Storage:
Store at -80°C.

Storage Buffer:
PBS Only

For technical support and original validation data for this product please contact:
T: 1 (888) 4PTGLAB (1-888-478-4522) (toll free in USA), or 1(312) 455-8498 (outside USA)
E: proteintech@ptglab.com
W: ptglab.com

This product is exclusively available under Proteintech Group brand and is not available to purchase from any other manufacturer.

Selected Validation Data



Cytometric bead array standard curve of MP50624-4, ALAS2 Monoclonal Matched Antibody Pair, PBS Only. Capture antibody: 68332-4-PBS. Detection antibody: 68332-5-PBS. Standard:Ag13524. Range: 3.125-200 ng/mL.