

For Research Use Only

# MAD2L1BP Monoclonal antibody

Catalog Number: 68336-1-Ig



## Basic Information

<b>Catalog Number:</b> 68336-1-Ig	<b>GenBank Accession Number:</b> BC002904	<b>Purification Method:</b> Protein A purification
<b>Size:</b> 150ul , Concentration: 1000 µg/ml by Nanodrop;	<b>GeneID (NCBI):</b> 9587	<b>CloneNo.:</b> 2H3H1
<b>Source:</b> Mouse	<b>Full Name:</b> MAD2L1 binding protein	<b>Recommended Dilutions:</b> WB 1:5000-1:50000
<b>Isotype:</b> IgG2a	<b>Calculated MW:</b> 34 kDa	
<b>Immunogen Catalog Number:</b> AG7653	<b>Observed MW:</b> 34 kDa	

## Applications

**Tested Applications:**  
WB, ELISA

**Species Specificity:**  
Human

### Positive Controls:

**WB:** A431 cells, HepG2 cells, MCF-7 cells, MDA-MB-468 cells, MDA-MB-231 cells, Jurkat cells, K-562 cells

## Background Information

MAD2L1BP, also named as CMT2 and KIAA0110, belongs to the MAD2L1BP family. It may function to silence the spindle checkpoint and allow mitosis to proceed through anaphase by binding MAD2L1 after it has become dissociated from the MAD2L1-CDC20 complex. MAD2L1BP interacts with the spindle checkpoint and coordinates cell cycle events in late mitosis. MAD2L1BP may play an active role to remove MAD2 from p55CDC and tether MAD2 for silencing the checkpoint.

## Storage

**Storage:**  
Store at -20°C. Stable for one year after shipment.

**Storage Buffer:**  
PBS with 0.02% sodium azide and 50% glycerol pH 7.3.

Aliquoting is unnecessary for -20°C storage

\*\*\* 20ul sizes contain 0.1% BSA

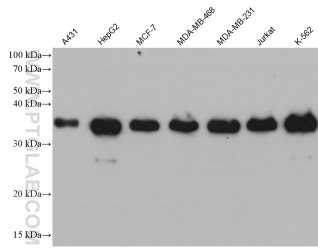
For technical support and original validation data for this product please contact:

T: 1 (888) 4PTGLAB (1-888-478-4522) (toll free in USA), or 1(312) 455-8498 (outside USA)

E: [proteintech@ptglab.com](mailto:proteintech@ptglab.com)  
W: [ptglab.com](http://ptglab.com)

This product is exclusively available under Proteintech Group brand and is not available to purchase from any other manufacturer.

## Selected Validation Data



Various lysates were subjected to SDS PAGE followed by western blot with 68336-1-Ig (MAD2L1BP antibody) at dilution of 1:10000 incubated at room temperature for 1.5 hours.