

For Research Use Only

CCS Monoclonal antibody

Catalog Number: 68341-1-Ig **Featured Product**



Basic Information

Catalog Number: 68341-1-Ig	GenBank Accession Number: BC105016	Purification Method: Protein A purification
Size: 150ul , Concentration: 1000 µg/ml by Nanodrop;	GeneID (NCBI): 9973	CloneNo.: 3F5E5
Source: Mouse	Full Name: copper chaperone for superoxide dismutase	Recommended Dilutions: WB 1:5000-1:50000 IHC 1:50-1:500 IF 1:500-1:2000
Isotype: IgG2a	Calculated MW: 274 aa, 29 kDa	
Immunogen Catalog Number: AG18860	Observed MW: 32 kDa	

Applications

Tested Applications: IF, IHC, WB, ELISA	Positive Controls: WB : LNCaP cells, HepG2 cells, A549 cells
Species Specificity: Human, mouse, rat	IHC : mouse brain tissue, IF : HepG2 cells,
Note-IHC: suggested antigen retrieval with TE buffer pH 9.0; (*) Alternatively, antigen retrieval may be performed with citrate buffer pH 6.0	

Background Information

Copper chaperone for superoxide dismutase (CCS) is a soluble factor that converts copper into copper-zinc superoxide dismutase (SOD1). CCS and SOD1 interact directly in vivo and in vitro, and this interaction is mediated by homologous domains in each protein. CCS not only interacts with wild-type SOD1 but also interacts with SOD1 containing common missense mutations, resulting in FALS.

Storage

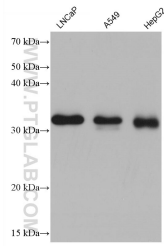
Storage:
Store at -20°C. Stable for one year after shipment.
Storage Buffer:
PBS with 0.02% sodium azide and 50% glycerol pH 7.3.
Aliquoting is unnecessary for -20°C storage

*** 20ul sizes contain 0.1% BSA

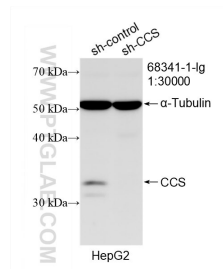
For technical support and original validation data for this product please contact:
T: 1 (888) 4PTGLAB (1-888-478-4522) (toll free in USA), or 1(312) 455-8498 (outside USA) E: proteintech@ptglab.com
W: ptglab.com

This product is exclusively available under Proteintech Group brand and is not available to purchase from any other manufacturer.

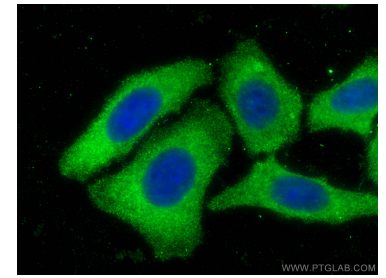
Selected Validation Data



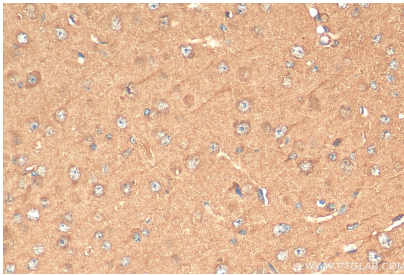
Various lysates were subjected to SDS PAGE followed by western blot with 68341-1-Ig (CCS antibody) at dilution of 1:10000 incubated at room temperature for 1.5 hours.



WB result of CCS antibody (68341-1-Ig; 1:30000; incubated at room temperature for 1.5 hours) with sh-Control and sh-CCS transfected HepG2 cells.



Immunofluorescent analysis of (-20°C Methanol) fixed HepG2 cells using CCS antibody (68341-1-Ig, Clone: 3F5E5) at dilution of 1:1000 and CoraLite@488-Conjugated AffiniPure Goat Anti-Mouse IgG(H+L).



Immunohistochemical analysis of paraffin-embedded mouse brain tissue slide using 68341-1-Ig (CCS antibody) at dilution of 1:200 (under 40x lens). Heat mediated antigen retrieval with Tris-EDTA buffer (pH 9.0).