

For Research Use Only

ZMAT3 Monoclonal antibody, PBS Only (Detector)



Catalog Number: 68346-1-PBS

Basic Information

| | | |
|--|---|---|
| Catalog Number: 68346-1-PBS | GenBank Accession Number: BC002896 | Purification Method: Protein G purification |
| Size: 100ug , Concentration: 1mg/ml by Nanodrop; | GeneID (NCBI): 64393 | CloneNo.: 2D2E7 |
| Source: Mouse | UNIPROT ID: Q9HA38 | |
| Isotype: IgG1 | Full Name: zinc finger, matrin type 3 | |
| Immunogen Catalog Number: AG20552 | Calculated MW: 32 kDa | |
| | Observed MW: ~32 kDa | |

Applications

Tested Applications:
WB, Indirect ELISA, Cytometric bead array

Species Specificity:
Human

Product Information

68346-1-PBS targets ZMAT3 as part of a matched antibody pair:

MP50120-1: 68346-2-PBS capture and 68346-1-PBS detection (validated in Cytometric bead array, Sandwich ELISA)

Unconjugated mouse monoclonal antibody pair in PBS only (BSA and azide free) storage buffer at a concentration of 1 mg/mL, ready for conjugation.

This conjugation ready format makes antibodies ideal for use in many applications including: ELISAs, multiplex assays requiring matched pairs, mass cytometry, and multiplex imaging applications. Antibody use should be optimized by the end user for each application and assay.

Background Information

ZMAT3 is a p53-induced zinc finger protein, and a role in the TP53-dependent growth regulatory pathway, contribute to TP53-mediated apoptosis by regulation of TP53 expression and translocation to the nucleus and nucleolus. Acts as a bona fide target gene of p53/TP53.

Storage

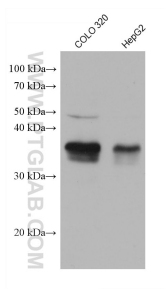
Storage:
Store at -80°C.

Storage Buffer:
PBS Only

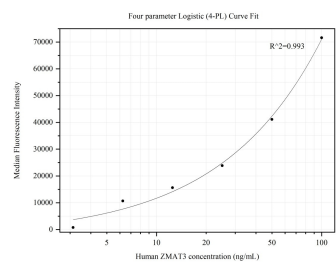
For technical support and original validation data for this product please contact:
T: 1 (888) 4PTGLAB (1-888-478-4522) (toll free in USA), or 1(312) 455-8498 (outside USA)
E: proteintech@ptglab.com
W: ptglab.com

This product is exclusively available under Proteintech Group brand and is not available to purchase from any other manufacturer.

Selected Validation Data



Various lysates were subjected to SDS PAGE followed by western blot with 68346-1-Ig (ZMAT3 antibody) at dilution of 1:5000 incubated at room temperature for 1.5 hours. This data was developed using the same antibody clone with 68346-1-PBS in a different storage buffer formulation.



Cytometric bead array standard curve of MP50120-1, ZMAT3 Monoclonal Matched Antibody Pair, PBS Only. Capture antibody: 68346-2-PBS. Detection antibody: 68346-1-PBS. Standard: Ag20552. Range: 3.125-100 ng/mL.