

For Research Use Only

# AP2B1 Monoclonal antibody

Catalog Number: 68349-1-Ig



## Basic Information

<b>Catalog Number:</b> 68349-1-Ig	<b>GenBank Accession Number:</b> BC006201	<b>Purification Method:</b> Protein A purification
<b>Size:</b> 150ul , Concentration: 500 µg/ml by Nanodrop;	<b>GeneID (NCBI):</b> 163	<b>CloneNo.:</b> 1A3B6
<b>Source:</b> Mouse	<b>Full Name:</b> adaptor-related protein complex 2, beta 1 subunit	<b>Recommended Dilutions:</b> WB 1:5000-1:50000 IF 1:1000-1:4000
<b>Isotype:</b> IgG2a	<b>Calculated MW:</b> 105 kDa	
<b>Immunogen Catalog Number:</b> AG8264	<b>Observed MW:</b> 100-115 kDa	

## Applications

### Tested Applications:

IF, WB, ELISA

### Species Specificity:

Human, Mouse, Rat, Rabbit, Pig

### Positive Controls:

**WB** : pig cerebellum tissue, HeLa cells, rabbit cerebellum tissue, rat cerebellum tissue, mouse cerebellum tissue

**IF** : HeLa cells,

## Background Information

AP2B1 is a component of the adaptor protein complex 2 (AP-2). AP complexes are cytosolic heterotetramers that mediate the sorting of membrane proteins in the secretory and endocytic pathways. AP complexes are involved in the formation of clathrin-coated vesicles (CCVs) by recruiting the scaffold protein, clathrin. AP complexes also play a pivotal role in the cargo selection by recognizing the sorting signals within the cytoplasmic tail of integral membrane proteins. AP-2 works on the plasma membrane to internalize cargo in clathrin-mediated endocytosis.

## Storage

### Storage:

Store at -20°C. Stable for one year after shipment.

### Storage Buffer:

PBS with 0.02% sodium azide and 50% glycerol pH 7.3.

Aliquoting is unnecessary for -20°C storage

\*\*\* 20ul sizes contain 0.1% BSA

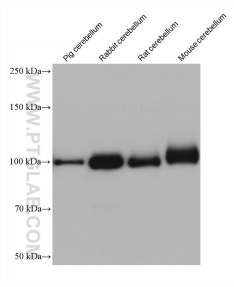
For technical support and original validation data for this product please contact:

T: 1 (888) 4PTGLAB (1-888-478-4522) (toll free in USA), or 1(312) 455-8498 (outside USA)

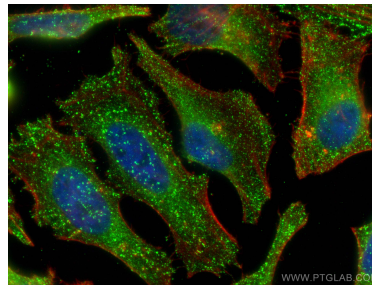
E: [proteintech@ptglab.com](mailto:proteintech@ptglab.com)  
W: [ptglab.com](http://ptglab.com)

**This product is exclusively available under Proteintech Group brand and is not available to purchase from any other manufacturer.**

## Selected Validation Data



Various lysates were subjected to SDS PAGE followed by western blot with 68349-1-Ig (AP2B1 antibody) at dilution of 1:10000 incubated at room temperature for 1.5 hours.



Immunofluorescent analysis of (4% PFA) fixed HeLa cells using AP2B1 antibody (68349-1-Ig, Clone: 1A3B6 ) at dilution of 1:2000 and CoraLite® 488-Conjugated AffiniPure Goat Anti-Mouse IgG(H+L).