

For Research Use Only

# ATPAF2 Monoclonal antibody

Catalog Number: 68351-1-Ig



## Basic Information

<b>Catalog Number:</b> 68351-1-Ig	<b>GenBank Accession Number:</b> BC032126	<b>Purification Method:</b> Protein G purification
<b>Size:</b> 150ul, Concentration: 1000 ug/ml by Nanodrop;	<b>GeneID (NCBI):</b> 91647	<b>CloneNo.:</b> 1H9A9
<b>Source:</b> Mouse	<b>UNIPROT ID:</b> Q8N5M1	<b>Recommended Dilutions:</b> WB 1:2000-1:10000 IHC 1:250-1:1000 IF/ICC 1:400-1:1600
<b>Isotype:</b> IgG1	<b>Full Name:</b> ATP synthase mitochondrial F1 complex assembly factor 2	
<b>Immunogen Catalog Number:</b> AG29065	<b>Calculated MW:</b> 289 aa, 33 kDa	
	<b>Observed MW:</b> ~30 kDa	

## Applications

<b>Tested Applications:</b> WB, IHC, IF/ICC, ELISA	<b>Positive Controls:</b>
<b>Species Specificity:</b> Human, mouse, rat	<b>WB :</b> HCT 116 cells, LNCaP cells, MCF-7 cells, HeLa cells, HEK-293 cells, HepG2 cells, Jurkat cells, HSC-T6 cells, NIH/3T3 cells
<b>Note-IHC:</b> suggested antigen retrieval with <b>TE buffer pH 9.0; (*) Alternatively, antigen retrieval may be performed with citrate buffer pH 6.0</b>	<b>IHC :</b> mouse heart tissue, <b>IF/ICC :</b> HepG2 cells,

## Background Information

ATP synthase mitochondrial F1 complex assembly factor 2 (ATPAF2) also name as ATP12 and ATP12p, is an essential house keeping protein. ATPAF2 is an assembly factor for the F1 component of mitochondrial ATP synthase. This protein binds specifically to the F1 alpha subunit and is thought to prevent this subunit from forming nonproductive homooligomers during enzyme assembly. The calculated MW is 33 kDa, 68351-1-Ig can detect bands around 30 kDa and 50 kDa, the larger band may correspond to dimer or complex form. (PMID: 1826907, 11410595)

## Storage

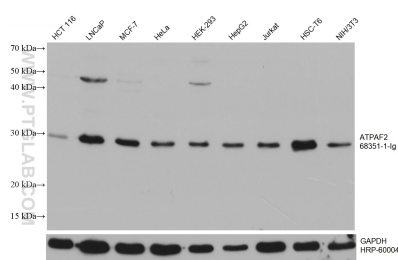
**Storage:**  
Store at -20°C. Stable for one year after shipment.  
**Storage Buffer:**  
PBS with 0.02% sodium azide and 50% glycerol pH 7.3.  
**Aliquoting is unnecessary for -20°C storage**

\*\*\* 20ul sizes contain 0.1% BSA

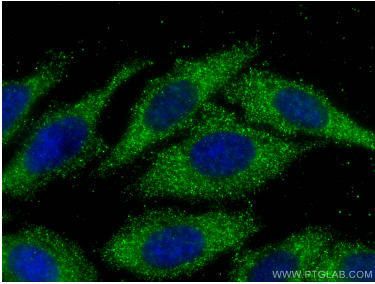
For technical support and original validation data for this product please contact:  
T: 1 (888) 4PTGLAB (1-888-478-4522) (toll free in USA), or 1(312) 455-8498 (outside USA)  
E: [proteintech@ptglab.com](mailto:proteintech@ptglab.com)  
W: [ptglab.com](http://ptglab.com)

This product is exclusively available under Proteintech Group brand and is not available to purchase from any other manufacturer.

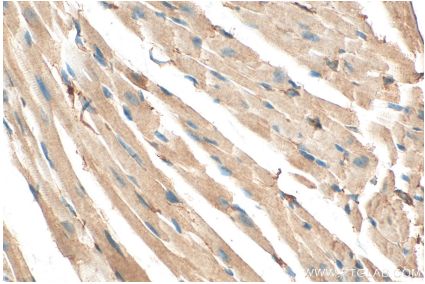
## Selected Validation Data



Various lysates were subjected to SDS PAGE followed by western blot with 68351-1-Ig (ATPAF2 antibody) at dilution of 1:5000 incubated at room temperature for 1.5 hours. The membrane was stripped and reblotted with HRP-conjugated GAPDH Monoclonal antibody (HRP-60004) as loading control.



Immunofluorescent analysis of (-20°C Ethanol) fixed HepG2 cells using ATPAF2 antibody (68351-1-Ig, Clone: 1H9A9) at dilution of 1:800 and CoraLite® 488-Conjugated Goat Anti-Mouse IgG(H+L).



Immunohistochemical analysis of paraffin-embedded mouse heart tissue slide using 68351-1-Ig (ATPAF2 antibody) at dilution of 1:500 (under 40x lens). Heat mediated antigen retrieval with Tris-EDTA buffer (pH 9.0).