

For Research Use Only

CRYBA2 Monoclonal antibody

Catalog Number: 68354-1-Ig



Basic Information

Catalog Number: 68354-1-Ig	GenBank Accession Number: BC006285	Purification Method: Protein G purification
Size: 150ul , Concentration: 1000 µg/ml by Nanodrop;	GeneID (NCBI): 1412	CloneNo.: 1G1A9
Source: Mouse	Full Name: crystallin, beta A2	Recommended Dilutions: WB 1:5000-1:50000
Isotype: IgG1	Calculated MW: 197 aa, 22 kDa	
Immunogen Catalog Number: AG8244	Observed MW: 22 kDa	

Applications

Tested Applications: WB, ELISA	Positive Controls: WB : rat eye tissue, mouse eye tissue
Species Specificity: Human, mouse, rat	

Background Information

CRYBA2, also named as Beta A2 crystallin, is a member of crystallin superfamily. Mammalian lens crystallins are divided into alpha, beta, and gamma families; beta and gamma crystallins are also defined as a superfamily. Alpha and beta families are further divided into acidic and basic groups. Crystallins are the dominant structural components of the vertebrate eye lens. The MW of this protein is 22 kDa, and this antibody specially recognises the 22 kDa protein.

Storage

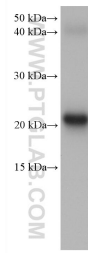
Storage:
Store at -20°C. Stable for one year after shipment.
Storage Buffer:
PBS with 0.02% sodium azide and 50% glycerol pH 7.3.
Aliquoting is unnecessary for -20°C storage

*** 20ul sizes contain 0.1% BSA

For technical support and original validation data for this product please contact:
T: 1 (888) 4PTGLAB (1-888-478-4522) (toll free in USA), or 1(312) 455-8498 (outside USA) E: proteintech@ptglab.com W: ptglab.com

This product is exclusively available under Proteintech Group brand and is not available to purchase from any other manufacturer.

Selected Validation Data



rat eye tissue were subjected to SDS PAGE followed by western blot with 68354-1-Ig (CRYBA2 antibody) at dilution of 1:20000 incubated at room temperature for 1.5 hours.