

For Research Use Only

# CRYBA2 Monoclonal antibody, PBS Only



Catalog Number: 68354-1-PBS

## Basic Information

<b>Catalog Number:</b> 68354-1-PBS	<b>GenBank Accession Number:</b> BC006285	<b>Purification Method:</b> Protein G purification
<b>Size:</b> 100ug , Concentration: 1 mg/ml by Nanodrop;	<b>GeneID (NCBI):</b> 1412	<b>CloneNo.:</b> 1G1A9
<b>Source:</b> Mouse	<b>UNIPROT ID:</b> P53672	
<b>Isotype:</b> IgG1	<b>Full Name:</b> crystallin, beta A2	
<b>Immunogen Catalog Number:</b> AG8244	<b>Calculated MW:</b> 197 aa, 22 kDa	
	<b>Observed MW:</b> 22 kDa	

## Applications

**Tested Applications:**  
WB, Indirect ELISA

**Species Specificity:**  
Human, mouse, rat

## Background Information

CRYBA2, also named as Beta A2 crystallin, is a member of crystallin superfamily. Mammalian lens crystallins are divided into alpha, beta, and gamma families; beta and gamma crystallins are also defined as a superfamily. Alpha and beta families are further divided into acidic and basic groups. Crystallins are the dominant structural components of the vertebrate eye lens. The MW of this protein is 22 kDa, and this antibody specially recognises the 22 kDa protein.

## Storage

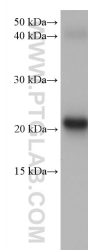
**Storage:**  
Store at -80°C.

**Storage Buffer:**  
PBS Only

For technical support and original validation data for this product please contact:  
T: 1 (888) 4PTGLAB (1-888-478-4522) (toll free in USA), or 1(312) 455-8498 (outside USA)  
E: [proteintech@ptglab.com](mailto:proteintech@ptglab.com)  
W: [ptglab.com](http://ptglab.com)

This product is exclusively available under Proteintech Group brand and is not available to purchase from any other manufacturer.

## Selected Validation Data



rat eye tissue were subjected to SDS PAGE followed by western blot with 68354-1-Ig (CRYBA2 antibody) at dilution of 1:20000 incubated at room temperature for 1.5 hours. This data was developed using the same antibody clone with 68354-1-PBS in a different storage buffer formulation.