

For Research Use Only

MID2 Monoclonal antibody

Catalog Number: 68359-1-Ig **1 Publications**



Basic Information

Catalog Number: 68359-1-Ig	GenBank Accession Number: BC017707	Purification Method: Protein G purification
Size: 150ul , Concentration: 1000 ug/ml by Nanodrop;	GeneID (NCBI): 11043	CloneNo.: 1F9E4
Source: Mouse	UNIPROT ID: Q9UJV3	Recommended Dilutions: WB 1:1000-1:4000
Isotype: IgG1	Full Name: midline 2	
Immunogen Catalog Number: AG30793	Calculated MW: 715 aa, 81 kDa	
	Observed MW: 80-83 kDa	

Applications

Tested Applications: WB, ELISA	Positive Controls: WB : A549 cells, Jurkat cells, MCF-7 cells, HEK-293 cells
Cited Applications: WB	
Species Specificity: Human	
Cited Species: human	

Background Information

Midline2 (MID2) is an ubiquitin-conjugating E2 enzyme that is involved in tumor development and has a physical interaction with breast cancer 1,early-onset (BRCA1).

Notable Publications

Author	Pubmed ID	Journal	Application
Liuliu Shi	38769340	Oncogenesis	WB

Storage

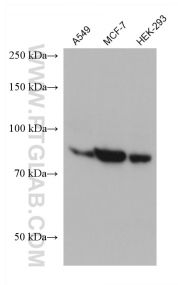
Storage:
Store at -20°C. Stable for one year after shipment.
Storage Buffer:
PBS with 0.02% sodium azide and 50% glycerol pH 7.3.
Aliquoting is unnecessary for -20°C storage

*** 20ul sizes contain 0.1% BSA

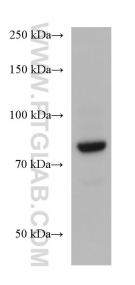
For technical support and original validation data for this product please contact:
T: 1 (888) 4PTGLAB (1-888-478-4522) (toll free in USA), or 1(312) 455-8498 (outside USA)
E: proteintech@ptglab.com
W: ptglab.com

This product is exclusively available under Proteintech Group brand and is not available to purchase from any other manufacturer.

Selected Validation Data



Various lysates were subjected to SDS PAGE followed by western blot with 68359-1-Ig (MID2 antibody) at dilution of 1:2000 incubated at room temperature for 1.5 hours.



Jurkat cells were subjected to SDS PAGE followed by western blot with 68359-1-Ig (MID2 antibody) at dilution of 1:2000 incubated at room temperature for 1.5 hours.