

For Research Use Only

# MID2 Monoclonal antibody, PBS Only

Catalog Number: 68359-1-PBS



## Basic Information

**Catalog Number:**

68359-1-PBS

**Size:**

100ug , Concentration: 1 mg/ml by Nanodrop;

**Source:**

Mouse

**Isotype:**

IgG1

**Immunogen Catalog Number:**

AG30793

**GenBank Accession Number:**

BC017707

**GeneID (NCBI):**

11043

**UNIPROT ID:**

Q9UJV3

**Full Name:**

midline 2

**Calculated MW:**

715 aa, 81 kDa

**Observed MW:**

80~83 kDa

**Purification Method:**

Protein G purification

**CloneNo.:**

1F9E4

## Applications

**Tested Applications:**

WB, Indirect ELISA

**Species Specificity:**

Human

## Background Information

Midline2 (MID2) is an ubiquitin-conjugating E2 enzyme that is involved in tumor development and has a physical interaction with breast cancer 1,early-onset (BRCA1).

## Storage

**Storage:**

Store at -80°C.

**Storage Buffer:**

PBS Only

For technical support and original validation data for this product please contact:

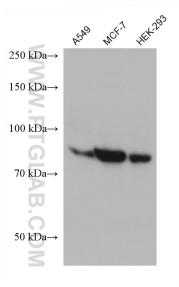
T: 1 (888) 4PTGLAB (1-888-478-4522) (toll free in USA), or 1(312) 455-8498 (outside USA)

E: [proteintech@ptglab.com](mailto:proteintech@ptglab.com)

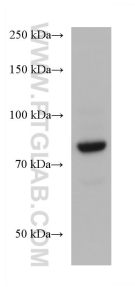
W: [ptglab.com](http://ptglab.com)

This product is exclusively available under Proteintech Group brand and is not available to purchase from any other manufacturer.

# Selected Validation Data



Various lysates were subjected to SDS PAGE followed by western blot with 68359-1-Ig (MID2 antibody) at dilution of 1:2000 incubated at room temperature for 1.5 hours. This data was developed using the same antibody clone with 68359-1-PBS in a different storage buffer formulation.



Jurkat cells were subjected to SDS PAGE followed by western blot with 68359-1-Ig (MID2 antibody) at dilution of 1:2000 incubated at room temperature for 1.5 hours. This data was developed using the same antibody clone with 68359-1-PBS in a different storage buffer formulation.