

For Research Use Only

DSP Monoclonal antibody

Catalog Number: 68364-1-Ig



Basic Information

Catalog Number: 68364-1-Ig	GenBank Accession Number: BC140802	Purification Method: Protein G purification
Size: 150ul , Concentration: 1000 µg/ml by Nanodrop and 485 µg/ml by Bradford method using BSA as the standard;	GeneID (NCBI): 1832	CloneNo.: 1B10D4
Source: Mouse	Full Name: desmoplakin	Recommended Dilutions: WB 1:5000-1:50000 IHC 1:1000-1:4000 IF 1:500-1:2000
Isotype: IgG1	Calculated MW: 2871 aa, 332 kDa	
Immunogen Catalog Number: AG30499	Observed MW: 240-330 kDa	

Applications

Tested Applications:

IF, IHC, WB, ELISA

Species Specificity:

Human

Note-IHC: suggested antigen retrieval with TE buffer pH 9.0; (*) Alternatively, antigen retrieval may be performed with citrate buffer pH 6.0

Positive Controls:

WB : HepG2 cells, HeLa cells, A431 cells, MCF-7 cells, HEK-293 cells

IHC : mouse heart tissue,

IF : A431 cells,

Background Information

The desmoplakin (DP) is the most abundant desmosomal proteins and is located at the cytoplasmic portion of the desmosomes which are specialized cell-cell adhesion structures abundant in tissues such as muscle and epidermis that are subjected to mechanical stress. Desmoplakin 1 and 2 (DP 1 and 2) are two splice variants sharing common C-terminal and N-terminal globular head and tail domains, but differ in the length of the rod domain that links them. This antibody detects both DP1 (280-330 kDa) and DP2 (240-260 kDa). (PMID: 16467215, 11781569)

Storage

Storage:

Store at -20°C. Stable for one year after shipment.

Storage Buffer:

PBS with 0.02% sodium azide and 50% glycerol pH 7.3.

Aliquoting is unnecessary for -20°C storage

*** 20ul sizes contain 0.1% BSA

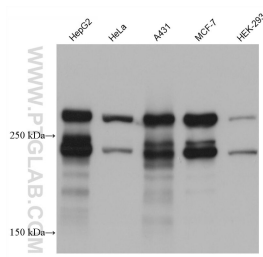
For technical support and original validation data for this product please contact:

T: 1 (888) 4PTGLAB (1-888-478-4522) (toll free in USA), or 1(312) 455-8498 (outside USA)

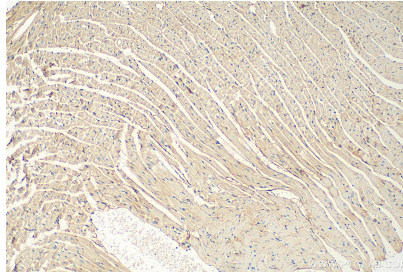
E: proteintech@ptglab.com
W: ptglab.com

This product is exclusively available under Proteintech Group brand and is not available to purchase from any other manufacturer.

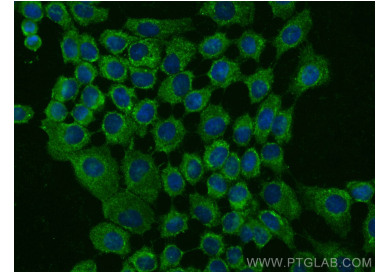
Selected Validation Data



Various lysates were subjected to SDS PAGE followed by western blot with 68364-1-Ig (DSP antibody) at dilution of 1:10000 incubated at room temperature for 1.5 hours.



Immunohistochemical analysis of paraffin-embedded mouse heart tissue slide using 68364-1-Ig (DSP antibody) at dilution of 1:2000 (under 10x lens). Heat mediated antigen retrieval with Tris-EDTA buffer (pH 9.0).



Immunofluorescent analysis of (-20°C Methanol) fixed A431 cells using DSP antibody (68364-1-Ig, Clone: 1B10D4) at dilution of 1:1000 and CoraLite@488-Conjugated AffiniPure Goat Anti-Mouse IgG(H+L).