

For Research Use Only

MITD1 Monoclonal antibody

Catalog Number: 68367-1-Ig



Basic Information

Catalog Number:

68367-1-Ig

Size:

150ul , Concentration: 1000 ug/ml by
Nanodrop;

Source:

Mouse

Isotype:

IgG1

Immunogen Catalog Number:

AG11237

GenBank Accession Number:

BC018453

GeneID (NCBI):

129531

UNIPROT ID:

Q8WV92

Full Name:

MIT, microtubule interacting and
transport, domain containing 1

Calculated MW:

249 aa, 29 kDa

Observed MW:

30 kDa

Purification Method:

Protein G purification

CloneNo.:

1F11E2

Recommended Dilutions:

WB 1:2000-1:10000

Applications

Tested Applications:

WB, ELISA

Species Specificity:

Human, Mouse, Rat

Positive Controls:

WB : MCF-7 cells, Saos-2 cells, U2OS cells, LNCaP cells,
HeLa cells, HEK-293 cells, HSC-T6 cells, NIH/3T3 cells,
4T1 cells

Storage

Storage:

Store at -20°C. Stable for one year after shipment.

Storage Buffer:

PBS with 0.02% sodium azide and 50% glycerol pH 7.3.

Aliquoting is unnecessary for -20°C storage

*** 20ul sizes contain 0.1% BSA

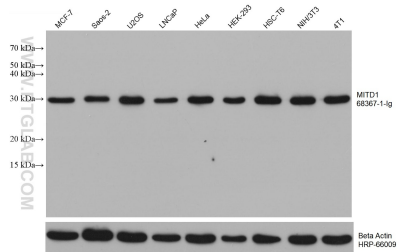
For technical support and original validation data for this product please contact:

T: 1 (888) 4PTGLAB (1-888-478-4522) (toll free
in USA), or 1(312) 455-8498 (outside USA)

E: proteintech@ptglab.com
W: ptglab.com

This product is exclusively available under Proteintech
Group brand and is not available to purchase from any
other manufacturer.

Selected Validation Data



Various lysates were subjected to SDS PAGE followed by western blot with 68367-1-Ig (MITD1 antibody) at dilution of 1:5000 incubated at room temperature for 1.5 hours. The membrane was stripped and reblotted with HRP-conjugated Beta Actin Monoclonal antibody (HRP-66009) as loading control.