

For Research Use Only

# RAP2A Monoclonal antibody

Catalog Number: 68368-1-Ig



## Basic Information

<b>Catalog Number:</b> 68368-1-Ig	<b>GenBank Accession Number:</b> BC041333	<b>Purification Method:</b> Protein G purification
<b>Size:</b> 150ul , Concentration: 1000 ug/ml by Nanodrop;	<b>GeneID (NCBI):</b> 5911	<b>CloneNo.:</b> 1F6F3
<b>Source:</b> Mouse	<b>UNIPROT ID:</b> P10114	<b>Recommended Dilutions:</b> WB 1:2000-1:10000 IF/ICC 1:200-1:800
<b>Isotype:</b> IgG1	<b>Full Name:</b> RAP2A, member of RAS oncogene family	
<b>Immunogen Catalog Number:</b> AG4979	<b>Calculated MW:</b> 183 aa, 21 kDa	
	<b>Observed MW:</b> 21 kDa	

## Applications

<b>Tested Applications:</b> WB, IF/ICC, ELISA	<b>Positive Controls:</b>
<b>Species Specificity:</b> human, mouse, rat, pig, rabbit	<b>WB :</b> pig brain tissue, rabbit brain tissue, rat brain tissue, mouse brain tissue <b>IF/ICC :</b> MCF-7 cells,

## Background Information

Ras-related protein Rap-2a (RAP2A) is also named as RbBP-30, and belongs to the small GTPase superfamily and Ras family. RAP2A is small GTP-binding protein which cycles between a GDP-bound inactive and a GTP-bound active form. In its active form, RAP2A can interact with and regulates several effectors including MAP4K4, MINK1 and TNIK. a Nedd4-1/Rap2A/TNIK signaling pathway regulates neurite growth and arborization in mammalian neurons (PMID:20159449). Early research indicated that RAP2A is mainly located in the Golgi apparatus of mammalian cells. RAP2A functions in several cascade signals to regulate biological behaviors such as cytoskeletal rearrangement, cell growth and apoptosis, and cell adhesion and migration (PMID:34018090, PMID:16246175, PMID: 16540189).

## Storage

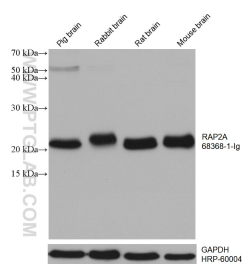
**Storage:**  
Store at -20°C. Stable for one year after shipment.  
**Storage Buffer:**  
PBS with 0.02% sodium azide and 50% glycerol pH 7.3.  
**Aliquoting is unnecessary for -20°C storage**

\*\*\* 20ul sizes contain 0.1% BSA

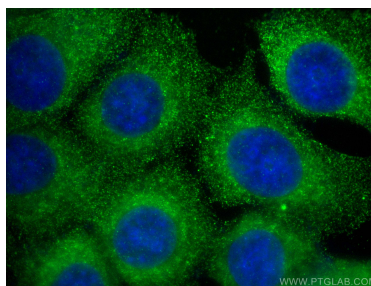
For technical support and original validation data for this product please contact:  
T: 1 (888) 4PTGLAB (1-888-478-4522) (toll free in USA), or 1(312) 455-8498 (outside USA)  
E: proteintech@ptglab.com  
W: ptglab.com

This product is exclusively available under Proteintech Group brand and is not available to purchase from any other manufacturer.

## Selected Validation Data



Various lysates were subjected to SDS PAGE followed by western blot with 68368-1-Ig (RAP2A antibody) at dilution of 1:5000 incubated at room temperature for 1.5 hours. The membrane was stripped and reblotted with HRP-conjugated GAPDH Monoclonal antibody (HRP-60004) as loading control.



Immunofluorescent analysis of (-20°C Methanol) fixed MCF-7 cells using RAP2A antibody (68368-1-Ig, Clone: 1F6F3 ) at dilution of 1:400 and Multi-rAb CoraLite® Plus 488-Goat Anti-Mouse Recombinant Secondary Antibody (H+L) (RGAM002).