

For Research Use Only

CCDC50 Monoclonal antibody

Catalog Number: 68369-1-Ig **1 Publications**



Basic Information

| | | |
|---|---|---|
| Catalog Number: 68369-1-Ig | GenBank Accession Number: BC065004 | Purification Method: Protein G purification |
| Size: 150ul , Concentration: 500 ug/ml by Nanodrop; | GeneID (NCBI): 152137 | CloneNo.: 2F12G7 |
| Source: Mouse | UNIPROT ID: Q8IVM0 | Recommended Dilutions: WB 1:20000-1:100000 |
| Isotype: IgG1 | Full Name: coiled-coil domain containing 50 | |
| Immunogen Catalog Number: AG15889 | Calculated MW: 482 aa, 56 kDa | |
| | Observed MW: 36-38 kDa | |

Applications

| | |
|--|---|
| Tested Applications: WB, FC (Intra), ELISA | Positive Controls: WB : A549 cells, HeLa cells, HEK-293 cells, HepG2 cells, K-562 cells, HSC-T6 cells, NIH/3T3 cells, 4T1 cells |
| Cited Applications: WB | |
| Species Specificity: human | |
| Cited Species: human | |

Background Information

CCDC50 encodes Ymer, an effector of epidermal growth factor (EGF)-mediated cell signaling that is ubiquitously expressed in different organs and has been suggested to inhibit down-regulation of the EGF receptor. CCDC50 act as a multifunctional regulator in NF- κ B and Fas signaling pathways. In chronic lymphocytic leukaemia (CLL) and mantle cell lymphoma (MCL), CCDC50 is required for the survival of MCL and CLL cancer cells. Recently, CCDC50 was shown to promote hepatocellular carcinoma through the Ras/Foxo4 signaling pathway. (PMID: 34453126, PMID: 32612200, PMID: 17503326)

Notable Publications

| Author | Pubmed ID | Journal | Application |
|-----------|-----------|----------|-------------|
| Guoxiu Li | 39285245 | EMBO Rep | WB |

Storage

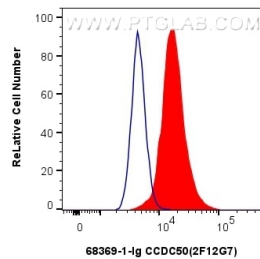
Storage:
Store at -20°C. Stable for one year after shipment.
Storage Buffer:
PBS with 0.02% sodium azide and 50% glycerol pH 7.3.
Aliquoting is unnecessary for -20°C storage

*** 20ul sizes contain 0.1% BSA

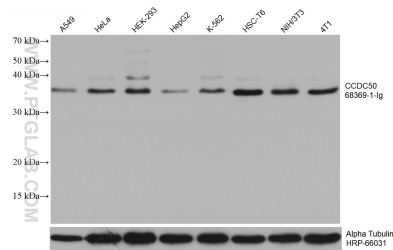
For technical support and original validation data for this product please contact:
T: 1 (888) 4PTGLAB (1-888-478-4522) (toll free in USA), or 1(312) 455-8498 (outside USA)
E: proteintech@ptglab.com
W: ptglab.com

This product is exclusively available under Proteintech Group brand and is not available to purchase from any other manufacturer.

Selected Validation Data



1x10⁶ A549 cells were intracellularly stained with 0.4 ug CCDC50 Monoclonal antibody (68369-1-Ig, Clone:2F12G7) and CoraLite®488-Conjugated Goat Anti-Mouse IgG(H+L) (SA00013-1)(red), or 0.4 ug Mouse IgG1 isotype control Mouse McAb (66360-1-Ig, Clone: 1F8D3) (blue). Cells were fixed with 4% PFA and permeabilized with Flow Cytometry Perm Buffer (PF00011-C).



Various lysates were subjected to SDS PAGE followed by western blot with 68369-1-Ig (CCDC50 antibody) at dilution of 1:50000 incubated at room temperature for 1.5 hours. The membrane was stripped and reblotted with HRP-conjugated Alpha Tubulin Monoclonal antibody (HRP-66031) as loading control.