

For Research Use Only

# TBCC Monoclonal antibody

Catalog Number: 68371-1-Ig



## Basic Information

<b>Catalog Number:</b> 68371-1-Ig	<b>GenBank Accession Number:</b> BC020170	<b>Purification Method:</b> Protein G purification
<b>Size:</b> 150ul , Concentration: 1000 µg/ml by Nanodrop;	<b>GeneID (NCBI):</b> 6903	<b>CloneNo.:</b> 2B7D9
<b>Source:</b> Mouse	<b>Full Name:</b> tubulin folding cofactor C	<b>Recommended Dilutions:</b> WB 1:5000-1:50000
<b>Isotype:</b> IgG1	<b>Calculated MW:</b> 346 aa, 39 kDa	
<b>Immunogen Catalog Number:</b> AG8962	<b>Observed MW:</b> 39 kDa	

## Applications

**Tested Applications:**  
WB, ELISA

**Species Specificity:**  
Human, mouse, rat

**Positive Controls:**

**WB :** HT-1376 cells, Calu-3 cells, HeLa cells, MDA-MB-231 cells, MDA-MB-468 cells, HepG2 cells, HSC-T6 cells, 4T1 cells, NIH/3T3 cells

## Background Information

TBCC, also named CFC. Expressed in the retina. Expressed in the rod and cone photoreceptors, extending from the inner segments (IS), through the outer nuclear layer (ONL) and into the synapses in the outer plexiform layer (OPL). Strongly expressed to the photoreceptor connecting cilium at the tips of the IS (at protein level). Cofactor C was cytoplasmic in distribution (PMID: 12417528).

## Storage

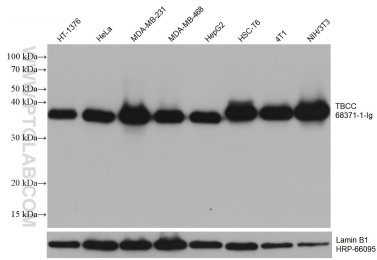
**Storage:**  
Store at -20°C. Stable for one year after shipment.  
**Storage Buffer:**  
PBS with 0.02% sodium azide and 50% glycerol pH 7.3.  
Aliquoting is unnecessary for -20°C storage

\*\*\* 20ul sizes contain 0.1% BSA

For technical support and original validation data for this product please contact:  
T: 1 (888) 4PTGLAB (1-888-478-4522) (toll free in USA), or 1(312) 455-8498 (outside USA)  
E: [proteintech@ptglab.com](mailto:proteintech@ptglab.com)  
W: [ptglab.com](http://ptglab.com)

This product is exclusively available under Proteintech Group brand and is not available to purchase from any other manufacturer.

## Selected Validation Data



Various lysates were subjected to SDS PAGE followed by western blot with 68371-1-Ig (TBCC antibody) at dilution of 1:10000 incubated at room temperature for 1.5 hours. The membrane was stripped and reblotted with HRP-conjugated Lamin B1 Monoclonal antibody (HRP-66095) as loading control.