

For Research Use Only

CREB3 Monoclonal antibody

Catalog Number: 68379-1-Ig



Basic Information

Catalog Number: 68379-1-Ig	GenBank Accession Number: BC009402	Purification Method: Protein G purification
Size: 150ul , Concentration: 1000 µg/ml by Nanodrop;	GeneID (NCBI): 10488	CloneNo.: 1C12H11
Source: Mouse	Full Name: cAMP responsive element binding protein 3	Recommended Dilutions: WB 1:1000-1:6000 IF 1:400-1:1600
Isotype: IgG1	Calculated MW: 44 kDa	
Immunogen Catalog Number: AG1823	Observed MW: 40-64 kDa	

Applications

Tested Applications: IF, WB, ELISA	Positive Controls:
Species Specificity: Human	WB : HEK-293 cells, T-47D cells, HCT 116 cells, hTERT-RPE1 cells IF : U2OS cells,

Background Information

CREB3, also named as LZIP and Luman, belongs to the bZIP family and ATF subfamily. It is a transcription factors activated upon intramembrane proteolysis (RIP), binds the cAMP response element (CRE) (consensus: 5'-GTGACGT[AG][AG]-3'), a sequence present in many viral and cellular promoters. CREB3 binds to and requires HCFC1 as a coactivator. The activity and expression are suppressed when the HCFC1-CREB3 complex binds with CREBZF. Participates in LKN-1/CCL15-induced chemotaxis signaling. CREB3 is N-glycosylated and released by proteolysis. So the MW of CREB3 emirate 40kd to 64kd (PMID: 12138176).

Storage

Storage:
Store at -20°C. Stable for one year after shipment.
Storage Buffer:
PBS with 0.02% sodium azide and 50% glycerol pH 7.3.
Aliquoting is unnecessary for -20°C storage

*** 20ul sizes contain 0.1% BSA

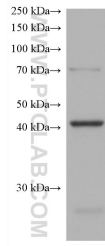
For technical support and original validation data for this product please contact:

T: 1 (888) 4PTGLAB (1-888-478-4522) (toll free in USA), or 1(312) 455-8498 (outside USA)

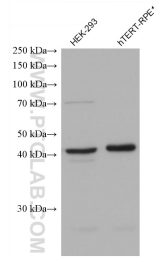
E: proteintech@ptglab.com
W: ptglab.com

This product is exclusively available under Proteintech Group brand and is not available to purchase from any other manufacturer.

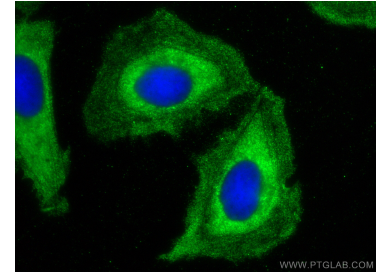
Selected Validation Data



HCT 116 cells were subjected to SDS PAGE followed by western blot with 68379-1-Ig (CREB3 antibody) at dilution of 1:3000 incubated at room temperature for 1.5 hours.



Various lysates were subjected to SDS PAGE followed by western blot with 68379-1-Ig (CREB3 antibody) at dilution of 1:3000 incubated at room temperature for 1.5 hours.



Immunofluorescent analysis of (-20°C Methanol) fixed U2OS cells using CREB3 antibody (68379-1-Ig, Clone: 1C12H11) at dilution of 1:800 and CoraLite@488-Conjugated AffiniPure Goat Anti-Mouse IgG(H+L).