

For Research Use Only

# CREB3 Monoclonal antibody, PBS Only (Detector)

Catalog Number: 68379-1-PBS



## Basic Information

<b>Catalog Number:</b> 68379-1-PBS	<b>GenBank Accession Number:</b> BC009402	<b>Purification Method:</b> Protein G purification
<b>Size:</b> 100ug , Concentration: 1mg/ml by Nanodrop;	<b>GeneID (NCBI):</b> 10488	<b>CloneNo.:</b> 1C12H11
<b>Source:</b> Mouse	<b>UNIPROT ID:</b> O43889	
<b>Isotype:</b> IgG1	<b>Full Name:</b> cAMP responsive element binding protein 3	
<b>Immunogen Catalog Number:</b> AG1823	<b>Calculated MW:</b> 44 kDa	
	<b>Observed MW:</b> 40-64 kDa	

## Applications

**Tested Applications:**  
WB, IF/ICC, Cytometric bead array, Indirect ELISA

**Species Specificity:**  
human

## Product Information

68379-1-PBS targets CREB3 as part of a matched antibody pair:

MP50828-4: 68379-7-PBS capture and 68379-1-PBS detection (validated in Cytometric bead array)

Unconjugated mouse monoclonal antibody pair in PBS only (BSA and azide free) storage buffer at a concentration of 1 mg/mL, ready for conjugation.

This conjugation ready format makes antibodies ideal for use in many applications including: ELISAs, multiplex assays requiring matched pairs, mass cytometry, and multiplex imaging applications. Antibody use should be optimized by the end user for each application and assay.

## Background Information

CREB3, also named as LZIP and Luman, belongs to the bZIP family and ATF subfamily. It is a transcription factor activated upon intramembrane proteolysis (RIP), binds the cAMP response element (CRE) (consensus: 5'-GTGACGT[AG][AG]-3'), a sequence present in many viral and cellular promoters. CREB3 binds to and requires HCFC1 as a coactivator. The activity and expression are suppressed when the HCFC1-CREB3 complex binds with CREBZF. Participates in LKN-1/CCL15-induced chemotaxis signaling. CREB3 is N-glycosylated and released by proteolysis. So the MW of CREB3 emirate 40kd to 64kd (PMID: 12138176).

## Storage

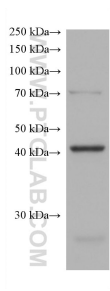
**Storage:**  
Store at -80°C.

**Storage Buffer:**  
PBS Only

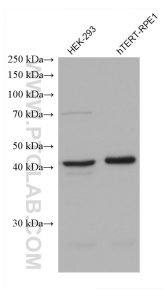
For technical support and original validation data for this product please contact:  
T: 1 (888) 4PTGLAB (1-888-478-4522) (toll free in USA), or 1(312) 455-8498 (outside USA)  
E: [proteintech@ptglab.com](mailto:proteintech@ptglab.com)  
W: [ptglab.com](http://ptglab.com)

This product is exclusively available under Proteintech Group brand and is not available to purchase from any other manufacturer.

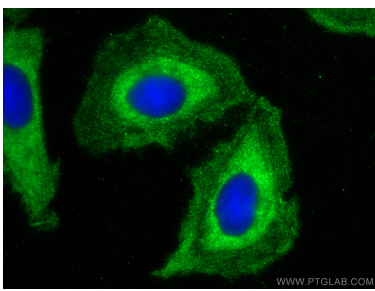
## Selected Validation Data



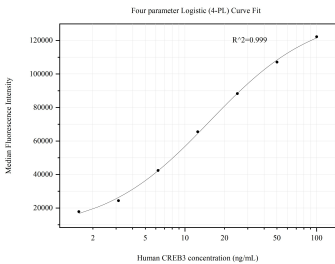
HCT 116 cells were subjected to SDS PAGE followed by western blot with 68379-1-Ig (CREB3 antibody) at dilution of 1:3000 incubated at room temperature for 1.5 hours. This data was developed using the same antibody clone with 68379-1-PBS in a different storage buffer formulation.



Various lysates were subjected to SDS PAGE followed by western blot with 68379-1-Ig (CREB3 antibody) at dilution of 1:3000 incubated at room temperature for 1.5 hours. This data was developed using the same antibody clone with 68379-1-PBS in a different storage buffer formulation.



Immunofluorescent analysis of (-20°C Methanol) fixed U2OS cells using CREB3 antibody (68379-1-Ig, Clone: 1C12H11 ) at dilution of 1:800 and CoraLite®488-Conjugated AffiniPure Goat Anti-Mouse IgG(H+L). This data was developed using the same antibody clone with 68379-1-PBS in a different storage buffer formulation.



Cytometric bead array standard curve of MP50828-4, CREB3 Monoclonal Matched Antibody Pair, PBS Only. Capture antibody: 68379-7-PBS. Detection antibody: 68379-1-PBS. Standard:Ag1823. Range: 1.563-100 ng/mL.